



ELECTRONIC COPY

LG763659269
Report verification at igi.org



January 13, 2026
IGI Report Number **LG763659269**
Description **LABORATORY GROWN DIAMOND**
Shape and Cutting Style **EMERALD CUT**
Measurements **7.00 X 4.92 X 2.90 MM**
GRADING RESULTS
Carat Weight **1.06 CARAT**
Color Grade **FANCY PINKISH BROWN**
Clarity Grade **VS 2**

January 13, 2026
IGI Report Number **LG763659269**
Description **LABORATORY GROWN DIAMOND**
Shape and Cutting Style **EMERALD CUT**
Measurements **7.00 X 4.92 X 2.90 MM**

GRADING RESULTS

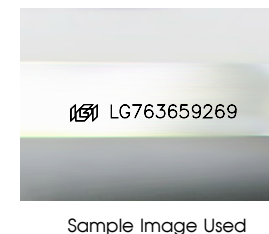
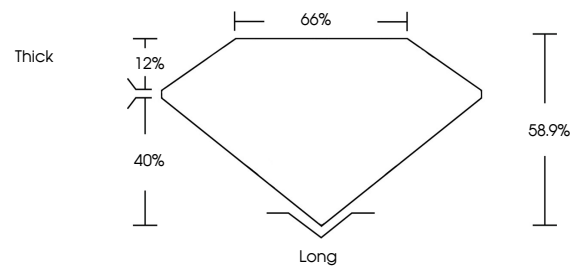
Carat Weight **1.06 CARAT**
Color Grade **FANCY PINKISH BROWN**
Clarity Grade **VS 2**

ADDITIONAL GRADING INFORMATION

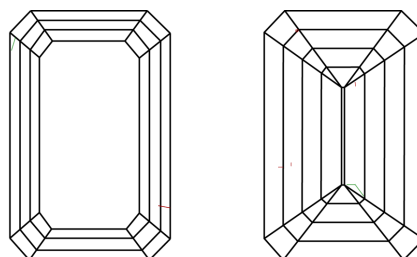
Polish **VERY GOOD**
Symmetry **GOOD**
Fluorescence **SLIGHT**
Inscription(s) **LG763659269**

Comments: This Laboratory Grown Diamond was created by Chemical Vapor Deposition (CVD) growth process.
Indications of post-growth treatment.

PROPORTIONS



CLARITY CHARACTERISTICS



KEY TO SYMBOLS

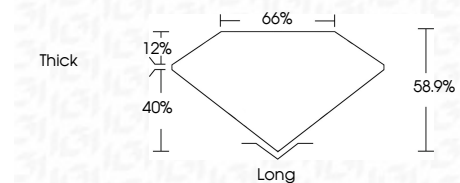
Red symbols indicate internal characteristics.
Green symbols indicate external characteristics.

COLOR

D E F G H I J Faint Very Light Light

CLARITY

FL	IF	VS ¹⁻²	VS ¹⁻²	SI ¹⁻²	I ¹⁻³
Flawless	Internally Flawless	Very Very Slightly Included	Very Slightly Included	Slightly Included	Included



ADDITIONAL GRADING INFORMATION

Polish **VERY GOOD**
Symmetry **GOOD**
Fluorescence **SLIGHT**
Inscription(s) **LG763659269**
Comments: This Laboratory Grown Diamond was created by Chemical Vapor Deposition (CVD) growth process.
Indications of post-growth treatment.



January 13, 2026
IGI Report No **LG763659269**
EMERALD CUT
7.00 X 4.92 X 2.90 MM
Carat Weight **1.06 CARAT**
Color Grade **FANCY PINKISH BROWN**
Clarity Grade **VS 2**
Depth **58.9%**
Table **65%**
Girdle **Thick**
Culet **Long**
Polish **VERY GOOD**
Symmetry **GOOD**
Fluorescence **SLIGHT**
Inscription(s) **LG763659269**
Comments: This Laboratory Grown Diamond was created by Chemical Vapor Deposition (CVD) growth process.
Indications of post-growth treatment.