



INTERNATIONAL GEMOLOGICAL INSTITUTE

LABORATORY GROWN DIAMOND REPORT

January 12, 2026
IGI Report Number **LG763664362**
Description **LABORATORY GROWN DIAMOND**
Shape and Cutting Style **PRINCESS CUT**
Measurements **4.93 X 4.93 X 3.63 MM**

GRADING RESULTS

Carat Weight **0.76 CARAT**
Color Grade **E**
Clarity Grade **VS 1**

ADDITIONAL GRADING INFORMATION

Polish **EXCELLENT**
Symmetry **VERY GOOD**
Fluorescence **NONE**
Inscription(s) **IGI LG763664362**

Comments: This Laboratory Grown Diamond was created by Chemical Vapor Deposition (CVD) growth process. Type IIa

Certified
**SUSTAINABILITY RATED
DIAMOND**

SCS GLOBAL SERVICES

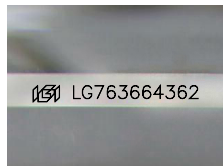
All certified diamonds come with an individual certificate, **ONLY** available at an accredited retailer



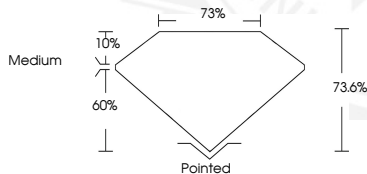
FOR THE SUSTAINABILITY RATED CERTIFICATE, SCAN HERE →

ELECTRONIC COPY

LG763664362



Sample Image Used



January 12, 2026
IGI Report Number **LG763664362**
PRINCESS CUT
LABORATORY GROWN DIAMOND
4.93 X 4.93 X 3.63 MM
Carat Weight **0.76 CARAT**
Color Grade **E**
Clarity Grade **VS 1**
Polish **EXCELLENT**
Symmetry **VERY GOOD**
Fluorescence **NONE**
Inscription(s) **IGI LG763664362**
Comments: This Laboratory Grown Diamond was created by Chemical Vapor Deposition (CVD) growth process. Type IIa



January 12, 2026
IGI Report Number **LG763664362**
PRINCESS CUT
LABORATORY GROWN DIAMOND
4.93 X 4.93 X 3.63 MM
Carat Weight **0.76 CARAT**
Color Grade **E**
Clarity Grade **VS 1**
Polish **EXCELLENT**
Symmetry **VERY GOOD**
Fluorescence **NONE**
Inscription(s) **IGI LG763664362**
Comments: This Laboratory Grown Diamond was created by Chemical Vapor Deposition (CVD) growth process. Type IIa



THIS DOCUMENT WAS PRODUCED WITH THE FOLLOWING SECURITY MEASURES: SPECIAL DOCUMENT PAPER, INK SCREENS, WATERMARK, BACKGROUND DESIGNS, HOLOGRAM AND OTHER SECURITY FEATURES NOT LISTED AND DO EXCEED DOCUMENT SECURITY INDUSTRY GUIDELINES.

For terms & conditions and to verify this report, please visit www.igi.org