



# INTERNATIONAL GEMOLOGICAL INSTITUTE

ELECTRONIC COPY

## LABORATORY GROWN DIAMOND REPORT

January 15, 2026  
IGI Report Number **LG763668213**  
Description **LABORATORY GROWN DIAMOND**  
Shape and Cutting Style **OVAL BRILLIANT**  
Measurements **6.53 X 4.54 X 2.94 MM**

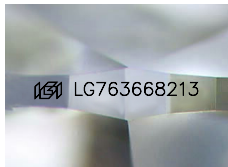
### GRADING RESULTS

Carat Weight **0.57 CARAT**  
Color Grade **E**  
Clarity Grade **SI 1**

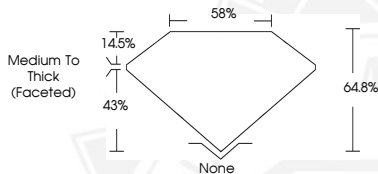
### ADDITIONAL GRADING INFORMATION

Polish **VERY GOOD**  
Symmetry **GOOD**  
Fluorescence **NONE**  
Inscription(s) **IGI LG763668213**

Comments: As Grown - No indication of post-growth treatment. This Laboratory Grown Diamond was created by High Pressure High Temperature (HPHT) growth process. Type II



Sample Image Used



January 15, 2026  
IGI Report Number **LG763668213**  
OVAL BRILLIANT  
LABORATORY GROWN DIAMOND  
**6.53 X 4.54 X 2.94 MM**  
Carat Weight **0.57 CARAT**  
Color Grade **E**  
Clarity Grade **SI 1**  
Polish **VERY GOOD**  
Symmetry **GOOD**  
Fluorescence **NONE**  
Inscription(s) **IGI LG763668213**

Comments: As Grown - No indication of post-growth treatment. This Laboratory Grown Diamond was created by High Pressure High Temperature (HPHT) growth process. Type II



January 15, 2026  
IGI Report Number **LG763668213**  
OVAL BRILLIANT  
LABORATORY GROWN DIAMOND  
**6.53 X 4.54 X 2.94 MM**  
Carat Weight **0.57 CARAT**  
Color Grade **E**  
Clarity Grade **SI 1**  
Polish **VERY GOOD**  
Symmetry **GOOD**  
Fluorescence **NONE**  
Inscription(s) **IGI LG763668213**

Comments: As Grown - No indication of post-growth treatment. This Laboratory Grown Diamond was created by High Pressure High Temperature (HPHT) growth process. Type II



THIS DOCUMENT WAS PRODUCED WITH THE FOLLOWING SECURITY MEASURES: SPECIAL DOCUMENT PAPER, INK SCREENS, WATERMARK, BACKGROUND DESIGNS, HOLOGRAM AND OTHER SECURITY FEATURES NOT LISTED AND DO EXCEED DOCUMENT SECURITY INDUSTRY GUIDELINES.

For terms & conditions and to verify this report, please visit [www.igi.org](http://www.igi.org)