



**ELECTRONIC COPY**

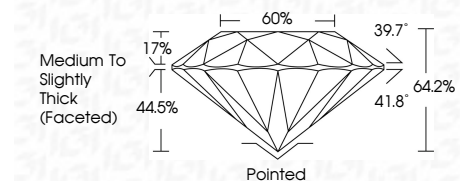
LG763668516  
Report verification at igi.org



January 18, 2026  
IGI Report Number **LG763668516**  
Description **LABORATORY GROWN DIAMOND**  
Shape and Cutting Style **ROUND BRILLIANT**  
Measurements **7.64 - 7.69 X 4.92 MM**

**GRADING RESULTS**

Carat Weight **1.80 CARAT**  
Color Grade **D**  
Clarity Grade **VS 2**  
Cut Grade **GOOD**



**ADDITIONAL GRADING INFORMATION**

Polish **VERY GOOD**  
Symmetry **VERY GOOD**  
Fluorescence **NONE**  
Inscription(s) **IGI LG763668516**  
Comments: As Grown - No indication of post-growth treatment.  
This Laboratory Grown Diamond was created by High Pressure High Temperature (HPHT) growth process.  
Type II



January 18, 2026  
IGI Report No LG763668516  
**ROUND BRILLIANT**  
1.80 CARAT  
Color Grade **D**  
Clarity Grade **VS 2**  
Cut Grade **GOOD**  
Depth **64.2%**  
Table **60%**  
Crown Height **Medium To Slightly Thick (Faceted)**  
Crown Angle **39.7°**  
Pavilion Angle **41.8°**  
Total Depth **64.2%**  
Culet **Pointed**  
Polish **VERY GOOD**  
Symmetry **VERY GOOD**  
Fluorescence **NONE**  
Inscription(s) **IGI LG763668516**  
Comments: As Grown - No indication of post-growth treatment.  
This Laboratory Grown Diamond was created by High Pressure High Temperature (HPHT) growth process.  
Type II

January 18, 2026  
IGI Report Number **LG763668516**  
Description **LABORATORY GROWN DIAMOND**  
Shape and Cutting Style **ROUND BRILLIANT**  
Measurements **7.64 - 7.69 X 4.92 MM**

**GRADING RESULTS**

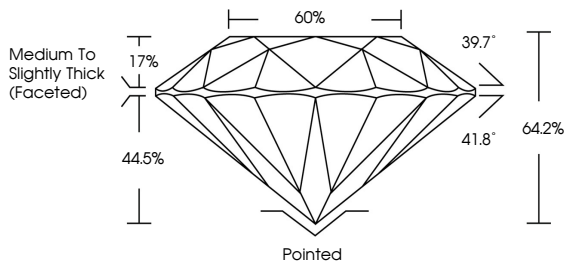
Carat Weight **1.80 CARAT**  
Color Grade **D**  
Clarity Grade **VS 2**  
Cut Grade **GOOD**

**ADDITIONAL GRADING INFORMATION**

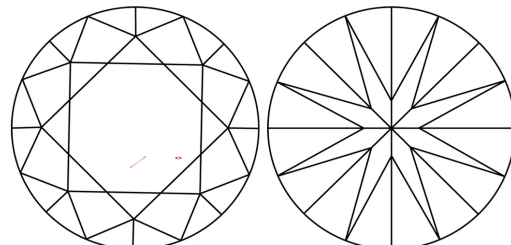
Polish **VERY GOOD**  
Symmetry **VERY GOOD**  
Fluorescence **NONE**  
Inscription(s) **IGI LG763668516**

Comments: As Grown - No indication of post-growth treatment.  
This Laboratory Grown Diamond was created by High Pressure High Temperature (HPHT) growth process.  
Type II

**PROPORTIONS**

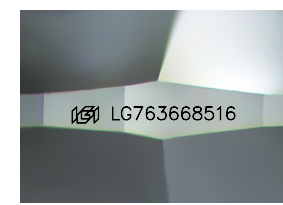


**CLARITY CHARACTERISTICS**



**KEY TO SYMBOLS**

Red symbols indicate internal characteristics.  
Green symbols indicate external characteristics.



Sample Image Used

**COLOR**

D E F G H I J Faint Very Light Light

**CLARITY**

FL	IF	VS <sup>1-2</sup>	VS <sup>1-2</sup>	SI <sup>1-2</sup>	I <sup>1-3</sup>
Flawless	Internally Flawless	Very Very Slightly Included	Very Slightly Included	Slightly Included	Included

