



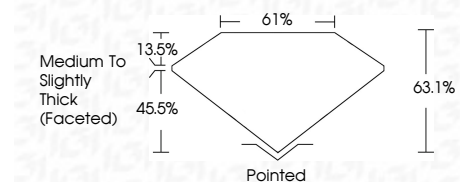
ELECTRONIC COPY

LG763670437 Report verification at igi.org



January 10, 2026 IGI Report Number LG763670437 Description LABORATORY GROWN DIAMOND Shape and Cutting Style OVAL BRILLIANT Measurements 10.40 X 7.05 X 4.45 MM

GRADING RESULTS Carat Weight 2.05 CARATS Color Grade F Clarity Grade VVS 1



ADDITIONAL GRADING INFORMATION Polish EXCELLENT Symmetry EXCELLENT Fluorescence NONE Inscription(s) IGI LG763670437 Comments: This Laboratory Grown Diamond was created by Chemical Vapor Deposition (CVD) growth process. Type IIa



January 10, 2026 IGI Report No LG763670437 OVAL BRILLIANT 2.05 CARATS F VVS 1 63.1% 61% Medium to Slightly Thick (Faceted) Pointed EXCELLENT EXCELLENT NONE IGI LG763670437 Comments: This Laboratory Grown Diamond was created by Chemical Vapor Deposition (CVD) growth process. Type IIa

LABORATORY GROWN DIAMOND REPORT

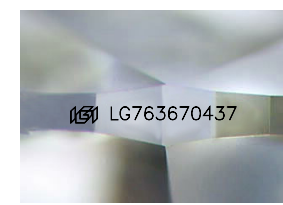
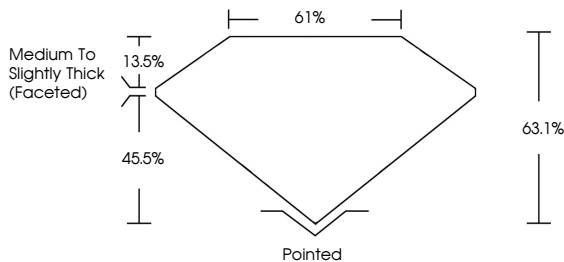
January 10, 2026 IGI Report Number LG763670437 Description LABORATORY GROWN DIAMOND Shape and Cutting Style OVAL BRILLIANT Measurements 10.40 X 7.05 X 4.45 MM

GRADING RESULTS Carat Weight 2.05 CARATS Color Grade F Clarity Grade VVS 1

ADDITIONAL GRADING INFORMATION Polish EXCELLENT Symmetry EXCELLENT Fluorescence NONE Inscription(s) IGI LG763670437

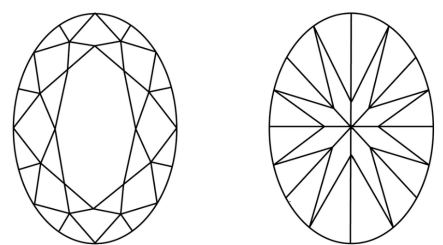
Comments: This Laboratory Grown Diamond was created by Chemical Vapor Deposition (CVD) growth process. Type IIa

PROPORTIONS



Sample Image Used

CLARITY CHARACTERISTICS



KEY TO SYMBOLS Red symbols indicate internal characteristics. Green symbols indicate external characteristics.

COLOR

Table with color grades: D, E, F, G, H, I, J, Faint, Very Light, Light

CLARITY

Table with clarity grades: FL, IF, VS 1-2, VS 1-2, SI 1-2, I 1-3, Flawless, Internally Flawless, Very Very Slightly Included, Very Slightly Included, Slightly Included, Included

