



# INTERNATIONAL GEMOLOGICAL INSTITUTE

## LABORATORY GROWN DIAMOND REPORT

January 8, 2026  
IGI Report Number **LG763674609**  
Description **LABORATORY GROWN DIAMOND**  
Shape and Cutting Style **PRINCESS CUT**  
Measurements **4.62 X 4.61 X 3.12 MM**

### GRADING RESULTS

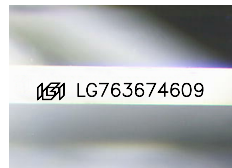
Carat Weight **0.58 CARAT**  
Color Grade **E**  
Clarity Grade **VVS 1**

### ADDITIONAL GRADING INFORMATION

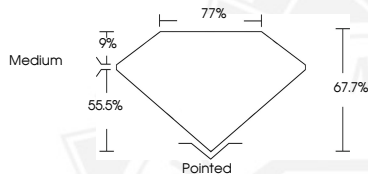
Polish **EXCELLENT**  
Symmetry **VERY GOOD**  
Fluorescence **NONE**  
Inscription(s) **IGI LG763674609**

Comments: This Laboratory Grown Diamond was created by Chemical Vapor Deposition (CVD) growth process. Type IIa

ELECTRONIC COPY



Sample Image Used



January 8, 2026

IGI Report Number **LG763674609**

**PRINCESS CUT**

**LABORATORY GROWN DIAMOND**

**4.62 X 4.61 X 3.12 MM**

Carat Weight **0.58 CARAT**

Color Grade **E**

Clarity Grade **VVS 1**

Polish **EXCELLENT**

Symmetry **VERY GOOD**

Fluorescence **NONE**

Inscription(s) **IGI LG763674609**

Comments: This Laboratory Grown Diamond was created by Chemical Vapor Deposition (CVD) growth process. Type IIa



January 8, 2026

IGI Report Number **LG763674609**

**PRINCESS CUT**

**LABORATORY GROWN DIAMOND**

**4.62 X 4.61 X 3.12 MM**

Carat Weight **0.58 CARAT**

Color Grade **E**

Clarity Grade **VVS 1**

Polish **EXCELLENT**

Symmetry **VERY GOOD**

Fluorescence **NONE**

Inscription(s) **IGI LG763674609**

Comments: This Laboratory Grown Diamond was created by Chemical Vapor Deposition (CVD) growth process. Type IIa



THIS DOCUMENT WAS PRODUCED WITH THE FOLLOWING SECURITY MEASURES: SPECIAL DOCUMENT PAPER, INK SCREENS, WATERMARK, BACKGROUND DESIGNS, HOLOGRAM AND OTHER SECURITY FEATURES NOT LISTED AND DO EXCEED DOCUMENT SECURITY INDUSTRY GUIDELINES.

For terms & conditions and to verify this report, please visit [www.igi.org](http://www.igi.org)