



January 29, 2026

IGI Report Number **LG764609486**

**HEART BRILLIANT  
LABORATORY GROWN DIAMOND  
5.06 X 5.63 X 3.01 MM**

Carat Weight **0.50 CARAT**  
Color Grade **E**  
Clarity Grade **VS 1**  
Polish **GOOD**  
Symmetry **VERY GOOD**  
Fluorescence **NONE**  
Inscription(s) **IGI LG764609486**

Comments: This Laboratory Grown Diamond was created by Chemical Vapor Deposition (CVD) growth process. Type IIa

**LABORATORY GROWN DIAMOND REPORT**

January 29, 2026

IGI Report Number

**LG764609486**

Description

**LABORATORY GROWN DIAMOND**

Shape and Cutting Style

**HEART BRILLIANT**

Measurements

**5.06 X 5.63 X 3.01 MM**

**GRADING RESULTS**

Carat Weight

**0.50 CARAT**

Color Grade

**E**

Clarity Grade

**VS 1**

**ADDITIONAL GRADING INFORMATION**

Polish

**GOOD**

Symmetry

**VERY GOOD**

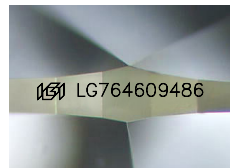
Fluorescence

**NONE**

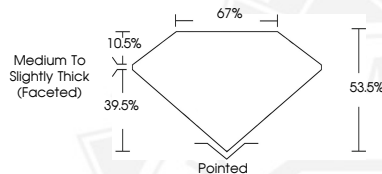
Inscription(s)

**IGI LG764609486**

Comments: This Laboratory Grown Diamond was created by Chemical Vapor Deposition (CVD) growth process. Type IIa



Sample Image Used



January 29, 2026

IGI Report Number **LG764609486**

**HEART BRILLIANT  
LABORATORY GROWN DIAMOND  
5.06 X 5.63 X 3.01 MM**

Carat Weight **0.50 CARAT**  
Color Grade **E**  
Clarity Grade **VS 1**  
Polish **GOOD**  
Symmetry **VERY GOOD**  
Fluorescence **NONE**  
Inscription(s) **IGI LG764609486**

Comments: This Laboratory Grown Diamond was created by Chemical Vapor Deposition (CVD) growth process. Type IIa



THIS DOCUMENT WAS PRODUCED WITH THE FOLLOWING SECURITY MEASURES: SPECIAL DOCUMENT PAPER, INK SCREENS, WATERMARK, BACKGROUND DESIGNS, HOLOGRAM AND OTHER SECURITY FEATURES NOT LISTED AND DO EXCEED DOCUMENT SECURITY INDUSTRY GUIDELINES.