



**INTERNATIONAL
GEMOLOGICAL
INSTITUTE**

ELECTRONIC COPY

LABORATORY GROWN DIAMOND REPORT

February 2, 2026
 IGI Report Number **LG764610097**
 Description **LABORATORY GROWN DIAMOND**
 Shape and Cutting Style **PEAR BRILLIANT**
 Measurements **7.68 X 4.54 X 2.67 MM**

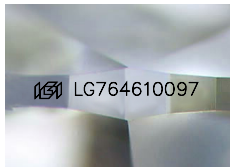
GRADING RESULTS

Carat Weight **0.53 CARAT**
 Color Grade **E**
 Clarity Grade **VVS 1**

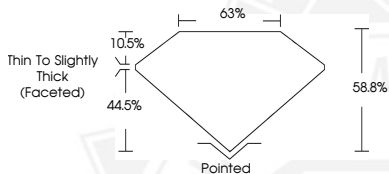
ADDITIONAL GRADING INFORMATION

Polish **VERY GOOD**
 Symmetry **VERY GOOD**
 Fluorescence **NONE**
 Inscription(s) **IGI LG764610097**

Comments: This Laboratory Grown Diamond was created by Chemical Vapor Deposition (CVD) growth process.
 Type IIa



Sample Image Used



February 2, 2026
 IGI Report Number **LG764610097**
PEAR BRILLIANT
LABORATORY GROWN DIAMOND
7.68 X 4.54 X 2.67 MM
 Carat Weight **0.53 CARAT**
 Color Grade **E**
 Clarity Grade **VVS 1**
 Polish **VERY GOOD**
 Symmetry **VERY GOOD**
 Fluorescence **NONE**
 Inscription(s) **IGI LG764610097**

Comments: This Laboratory Grown Diamond was created by Chemical Vapor Deposition (CVD) growth process. Type IIa



February 2, 2026
 IGI Report Number **LG764610097**
PEAR BRILLIANT
LABORATORY GROWN DIAMOND
7.68 X 4.54 X 2.67 MM
 Carat Weight **0.53 CARAT**
 Color Grade **E**
 Clarity Grade **VVS 1**
 Polish **VERY GOOD**
 Symmetry **VERY GOOD**
 Fluorescence **NONE**
 Inscription(s) **IGI LG764610097**

Comments: This Laboratory Grown Diamond was created by Chemical Vapor Deposition (CVD) growth process. Type IIa



THIS DOCUMENT WAS PRODUCED WITH THE FOLLOWING SECURITY MEASURES: SPECIAL DOCUMENT PAPER, INK SCREENS, WATERMARK, BACKGROUND DESIGNS, HOLOGRAM AND OTHER SECURITY FEATURES NOT LISTED AND DO EXCEED DOCUMENT SECURITY INDUSTRY GUIDELINES.

For terms & conditions and to verify this report, please visit www.igi.org