



LABORATORY GROWN DIAMOND REPORT

February 4, 2026
 IGI Report Number **LG764610339**
 Description **LABORATORY GROWN DIAMOND**
 Shape and Cutting Style **ROUND BRILLIANT**
 Measurements **4.83 - 4.88 X 2.82 MM**

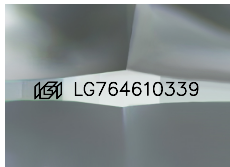
GRADING RESULTS

Carat Weight **0.41 CARAT**
 Color Grade **E**
 Clarity Grade **SI 1**
 Cut Grade **EXCELLENT**

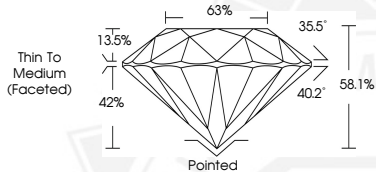
ADDITIONAL GRADING INFORMATION

Polish **EXCELLENT**
 Symmetry **VERY GOOD**
 Fluorescence **NONE**
 Inscription(s) **IGI LG764610339**

Comments: As Grown - No indication of post-growth treatment. This Laboratory Grown Diamond was created by High Pressure High Temperature (HPHT) growth process. Type II



Sample Image Used



February 4, 2026
 IGI Report Number **LG764610339**
 ROUND BRILLIANT
 LABORATORY GROWN DIAMOND
 4.83 - 4.88 X 2.82 MM
 0.41 CARAT
 E
 SI 1
 EXCELLENT
 EXCELLENT
 VERY GOOD
 NONE
 IGI LG764610339

Comments: As Grown - No indication of post-growth treatment. This Laboratory Grown Diamond was created by High Pressure High Temperature (HPHT) growth process. Type II



February 4, 2026
 IGI Report Number **LG764610339**
 ROUND BRILLIANT
 LABORATORY GROWN DIAMOND
 4.83 - 4.88 X 2.82 MM
 0.41 CARAT
 E
 SI 1
 EXCELLENT
 EXCELLENT
 VERY GOOD
 NONE
 IGI LG764610339

Comments: As Grown - No indication of post-growth treatment. This Laboratory Grown Diamond was created by High Pressure High Temperature (HPHT) growth process. Type II

THIS DOCUMENT WAS PRODUCED WITH THE FOLLOWING SECURITY MEASURES: SPECIAL DOCUMENT PAPER, INK SCREENS, WATERMARK, BACKGROUND DESIGNS, HOLOGRAM AND OTHER SECURITY FEATURES NOT LISTED AND DO EXCEED DOCUMENT SECURITY INDUSTRY GUIDELINES.