



**ELECTRONIC COPY**

LG764615733  
Report verification at igi.org



January 26, 2026

IGI Report Number **LG764615733**

Description **LABORATORY GROWN DIAMOND**

Shape and Cutting Style **EMERALD CUT**

Measurements **7.84 X 5.57 X 3.61 MM**

**GRADING RESULTS**

Carat Weight **1.53 CARAT**

Color Grade **E**

Clarity Grade **VVS 2**

January 26, 2026  
IGI Report Number **LG764615733**  
Description **LABORATORY GROWN DIAMOND**  
Shape and Cutting Style **EMERALD CUT**  
Measurements **7.84 X 5.57 X 3.61 MM**

**GRADING RESULTS**

Carat Weight **1.53 CARAT**

Color Grade **E**

Clarity Grade **VVS 2**

**ADDITIONAL GRADING INFORMATION**

Polish **EXCELLENT**

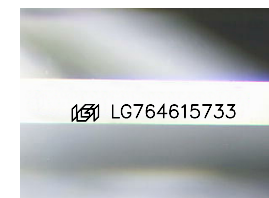
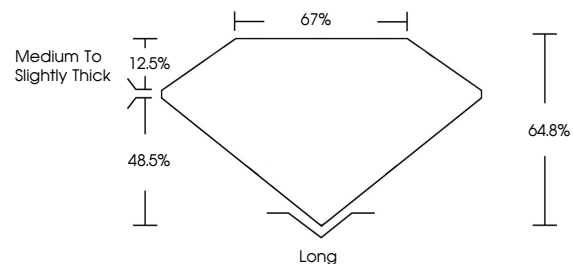
Symmetry **EXCELLENT**

Fluorescence **NONE**

Inscription(s) **IGI LG764615733**

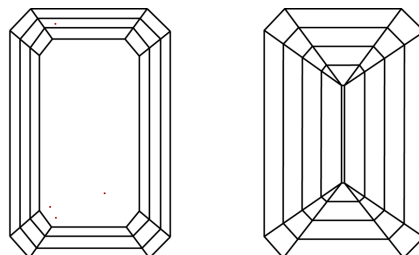
Comments: This Laboratory Grown Diamond was created by Chemical Vapor Deposition (CVD) growth process. Type IIa

**PROPORTIONS**



Sample Image Used

**CLARITY CHARACTERISTICS**



**KEY TO SYMBOLS**

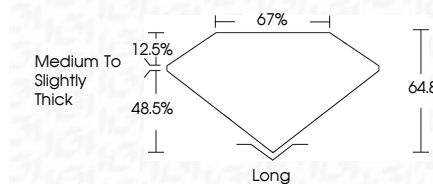
Red symbols indicate internal characteristics.  
Green symbols indicate external characteristics.

**COLOR**

D E F G H I J Faint Very Light Light

**CLARITY**

FL	IF	VVS <sup>1-2</sup>	VS <sup>1-2</sup>	SI <sup>1-2</sup>	I <sup>1-3</sup>
Flawless	Internally Flawless	Very Very Slightly Included	Very Slightly Included	Slightly Included	Included



**ADDITIONAL GRADING INFORMATION**

Polish **EXCELLENT**

Symmetry **EXCELLENT**

Fluorescence **NONE**

Inscription(s) **IGI LG764615733**

Comments: This Laboratory Grown Diamond was created by Chemical Vapor Deposition (CVD) growth process. Type IIa



**IGI**



January 26, 2026  
IGI Report No LG764615733  
**EMERALD CUT**  
7.84 X 5.57 X 3.61 MM  
1.53 CARAT  
Color Grade **E**  
Clarity Grade **VVS 2**  
Table **67%**  
Depth **64.8%**  
Girdle **Medium to Slightly Thick**  
Culet **Long**  
Polish **EXCELLENT**  
Symmetry **EXCELLENT**  
Fluorescence **NONE**  
Inscription(s) **IGI LG764615733**

Comments: This Laboratory Grown Diamond was created by Chemical Vapor Deposition (CVD) growth process. Type IIa