



ELECTRONIC COPY

LG764617169
Report verification at igi.org



February 16, 2026
IGI Report Number **LG764617169**
Description **LABORATORY GROWN DIAMOND**
Shape and Cutting Style **SQUARE CUSHION MODIFIED BRILLIANT**
Measurements **10.26 X 10.00 X 6.67 MM**
GRADING RESULTS
Carat Weight **6.51 CARATS**
Color Grade **FANCY VIVID PINK**
Clarity Grade **VS 1**

February 16, 2026
IGI Report Number **LG764617169**
Description **LABORATORY GROWN DIAMOND**
Shape and Cutting Style **SQUARE CUSHION MODIFIED BRILLIANT**
Measurements **10.26 X 10.00 X 6.67 MM**

GRADING RESULTS

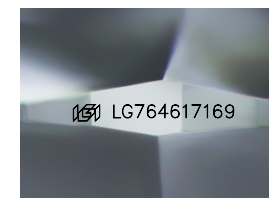
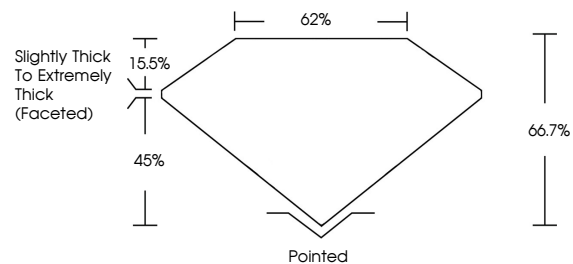
Carat Weight **6.51 CARATS**
Color Grade **FANCY VIVID PINK**
Clarity Grade **VS 1**

ADDITIONAL GRADING INFORMATION

Polish **EXCELLENT**
Symmetry **VERY GOOD**
Fluorescence **STRONG**
Inscription(s) **IGI LG764617169**

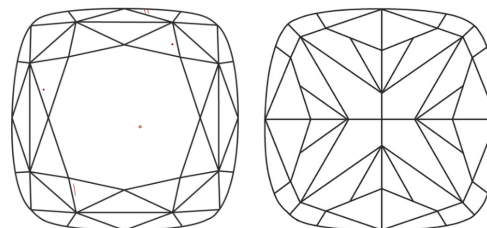
Comments: This Laboratory Grown Diamond was created by Chemical Vapor Deposition (CVD) growth process. Indications of post-growth treatment.

PROPORTIONS



Sample Image Used

CLARITY CHARACTERISTICS



KEY TO SYMBOLS

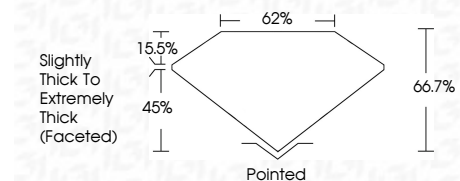
Red symbols indicate internal characteristics.
Green symbols indicate external characteristics.

COLOR

D E F G H I J Faint Very Light Light

CLARITY

FL	IF	VS ¹⁻²	VS ¹⁻²	SI ¹⁻²	I ¹⁻³
Flawless	Internally Flawless	Very Very Slightly Included	Very Slightly Included	Slightly Included	Included



ADDITIONAL GRADING INFORMATION

Polish **EXCELLENT**
Symmetry **VERY GOOD**
Fluorescence **STRONG**
Inscription(s) **IGI LG764617169**
Comments: This Laboratory Grown Diamond was created by Chemical Vapor Deposition (CVD) growth process. Indications of post-growth treatment.



February 16, 2026
IGI Report No LG764617169
SQUARE CUSHION MODIFIED BRILLIANT
10.26 X 10.00 X 6.67 MM
6.51 CARATS
FANCY VIVID PINK
VS 1
66.7%
62%
Slightly Thick To Extremely Thick (Faceted)
Pointed
EXCELLENT
VERY GOOD
STRONG
IGI LG764617169
Comments: This Laboratory Grown Diamond was created by Chemical Vapor Deposition (CVD) growth process. Indications of post-growth treatment.