



INTERNATIONAL GEMOLOGICAL INSTITUTE

ELECTRONIC COPY

LABORATORY GROWN DIAMOND REPORT

January 13, 2026

IGI Report Number

LG764623237

Description

LABORATORY GROWN DIAMOND

Shape and Cutting Style

ROUND BRILLIANT

Measurements

6.22 - 6.23 X 3.64 MM

GRADING RESULTS

Carat Weight

0.85 CARAT

Color Grade

H

Clarity Grade

VVS 2

Cut Grade

EXCELLENT

ADDITIONAL GRADING INFORMATION

Polish

VERY GOOD

Symmetry

EXCELLENT

Fluorescence

NONE

Inscription(s)

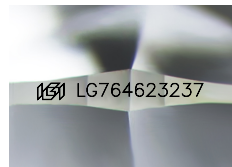
IGI LG764623237

Comments: As Grown - No indication of post-growth treatment.

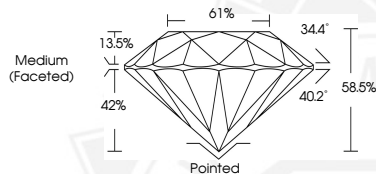
This Laboratory Grown Diamond was created by High Pressure High Temperature (HPHT) growth process.

Type II

Faint Blue



Sample Image Used



January 13, 2026

IGI Report Number LG764623237

ROUND BRILLIANT

LABORATORY GROWN DIAMOND

6.22 - 6.23 X 3.64 MM

Carat Weight 0.85 CARAT

Color Grade H

Clarity Grade VVS 2

Cut Grade EXCELLENT

Polish VERY GOOD

Symmetry EXCELLENT

Fluorescence NONE

Inscription(s) IGI LG764623237

Comments: As Grown - No indication of post-growth treatment. This Laboratory Grown Diamond was created by High Pressure High Temperature (HPHT) growth process. Type II Faint Blue



January 13, 2026

IGI Report Number LG764623237

ROUND BRILLIANT

LABORATORY GROWN DIAMOND

6.22 - 6.23 X 3.64 MM

Carat Weight 0.85 CARAT

Color Grade H

Clarity Grade VVS 2

Cut Grade EXCELLENT

Polish VERY GOOD

Symmetry EXCELLENT

Fluorescence NONE

Inscription(s) IGI LG764623237

Comments: As Grown - No indication of post-growth treatment. This Laboratory Grown Diamond was created by High Pressure High Temperature (HPHT) growth process. Type II Faint Blue



THIS DOCUMENT WAS PRODUCED WITH THE FOLLOWING SECURITY MEASURES: SPECIAL DOCUMENT PAPER, INK SCREENS, WATERMARK, BACKGROUND DESIGNS, HOLOGRAM AND OTHER SECURITY FEATURES NOT LISTED AND DO EXCEED DOCUMENT SECURITY INDUSTRY GUIDELINES.

For terms & conditions and to verify this report, please visit www.igi.org