



ELECTRONIC COPY

LG764636410
Report verification at igi.org



January 10, 2026

IGI Report Number **LG764636410**

Description **LABORATORY GROWN DIAMOND**

Shape and Cutting Style **CUT CORNERED
RECTANGULAR MODIFIED
BRILLIANT**

Measurements **10.93 X 6.39 X 4.09 MM**

GRADING RESULTS

Carat Weight **2.40 CARATS**

Color Grade **E**

Clarity Grade **INTERNALLY FLAWLESS**

LABORATORY GROWN DIAMOND REPORT

January 10, 2026

IGI Report Number **LG764636410**

Description **LABORATORY GROWN DIAMOND**

Shape and Cutting Style **CUT CORNERED RECTANGULAR
MODIFIED BRILLIANT**

Measurements **10.93 X 6.39 X 4.09 MM**

GRADING RESULTS

Carat Weight **2.40 CARATS**

Color Grade **E**

Clarity Grade **INTERNALLY FLAWLESS**

ADDITIONAL GRADING INFORMATION

Polish **EXCELLENT**

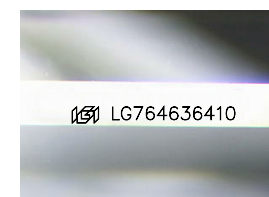
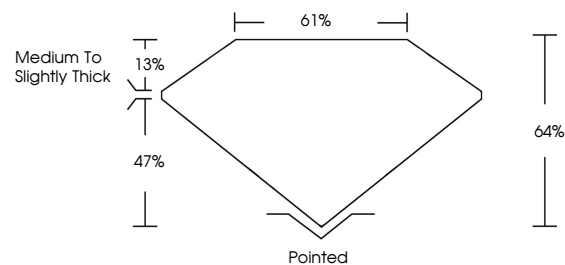
Symmetry **EXCELLENT**

Fluorescence **NONE**

Inscription(s) **IGI LG764636410**

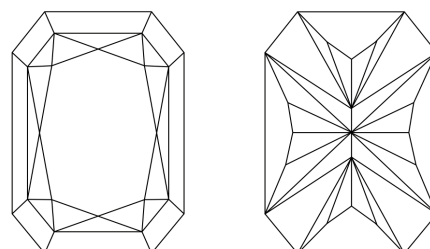
Comments: This Laboratory Grown Diamond was created by Chemical Vapor Deposition (CVD) growth process. Type IIa

PROPORTIONS



Sample Image Used

CLARITY CHARACTERISTICS



KEY TO SYMBOLS

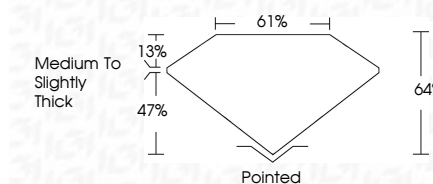
Red symbols indicate internal characteristics.
Green symbols indicate external characteristics.

COLOR

D E F G H I J Faint Very Light Light

CLARITY

| FL | IF | VS ¹⁻² | VS ¹⁻² | SI ¹⁻² | I ¹⁻³ |
|----------|---------------------|-----------------------------|------------------------|-------------------|------------------|
| Flawless | Internally Flawless | Very Very Slightly Included | Very Slightly Included | Slightly Included | Included |



ADDITIONAL GRADING INFORMATION

Polish **EXCELLENT**

Symmetry **EXCELLENT**

Fluorescence **NONE**

Inscription(s) **IGI LG764636410**

Comments: This Laboratory Grown Diamond was created by Chemical Vapor Deposition (CVD) growth process. Type IIa



IGI



January 10, 2026
IGI Report No LG764636410
CUT CORNERED RECT. MODIFIED BRILLIANT
10.93 X 6.39 X 4.09 MM
2.40 CARATS
E
Color Grade
Clarity Grade
Table
Girdle
Medium to Slightly Thick
Pointed
EXCELLENT
EXCELLENT
NONE
IGI LG764636410
Comments: This Laboratory Grown Diamond was created by Chemical Vapor Deposition (CVD) growth process. Type IIa