



ELECTRONIC COPY

LG764639717
Report verification at igi.org



January 13, 2026
IGI Report Number **LG764639717**
Description **LABORATORY GROWN DIAMOND**
Shape and Cutting Style **CUT CORNERED
RECTANGULAR MODIFIED
BRILLIANT**
Measurements **10.39 X 7.35 X 5.00 MM**
GRADING RESULTS
Carat Weight **3.61 CARATS**
Color Grade **FANCY YELLOW**
Clarity Grade **VS 1**

January 13, 2026
IGI Report Number **LG764639717**
Description **LABORATORY GROWN DIAMOND**
Shape and Cutting Style **CUT CORNERED RECTANGULAR
MODIFIED BRILLIANT**
Measurements **10.39 X 7.35 X 5.00 MM**

GRADING RESULTS

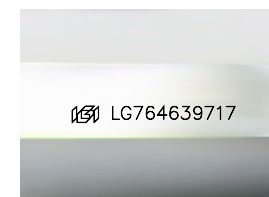
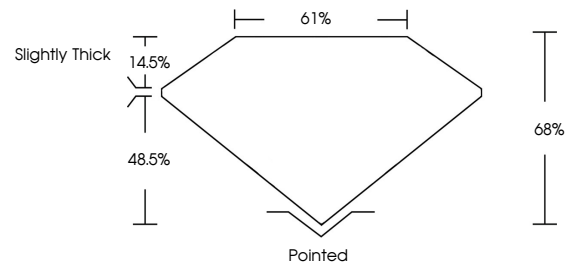
Carat Weight **3.61 CARATS**
Color Grade **FANCY YELLOW**
Clarity Grade **VS 1**

ADDITIONAL GRADING INFORMATION

Polish **EXCELLENT**
Symmetry **EXCELLENT**
Fluorescence **NONE**
Inscription(s) **IGI LG764639717**

Comments: This Laboratory Grown Diamond was created by Chemical Vapor Deposition (CVD) growth process.

PROPORTIONS



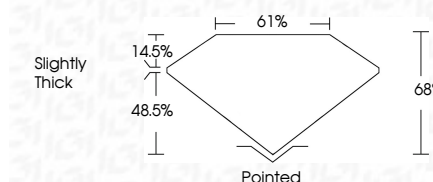
Sample Image Used

COLOR

D E F G H I J Faint Very Light Light

CLARITY

| FL | IF | VS ¹⁻² | VS ¹⁻² | SI ¹⁻² | I ¹⁻³ |
|----------|---------------------|-----------------------------|------------------------|-------------------|------------------|
| Flawless | Internally Flawless | Very Very Slightly Included | Very Slightly Included | Slightly Included | Included |



ADDITIONAL GRADING INFORMATION

Polish **EXCELLENT**
Symmetry **EXCELLENT**
Fluorescence **NONE**
Inscription(s) **IGI LG764639717**
Comments: This Laboratory Grown Diamond was created by Chemical Vapor Deposition (CVD) growth process.



IGI



January 13, 2026
IGI Report No **LG764639717**
CUT CORNERED RECT. MODIFIED BRILLIANT
10.39 X 7.35 X 5.00 MM
Carat Weight **3.61 CARATS**
Color Grade **FANCY YELLOW**
Clarity Grade **VS 1**
Depth **68%**
Table **61%**
Girdle **Slightly Thick**
Culet **Pointed**
Polish **EXCELLENT**
Symmetry **EXCELLENT**
Fluorescence **NONE**
Inscription(s) **IGI LG764639717**
Comments: This Laboratory Grown Diamond was created by Chemical Vapor Deposition (CVD) growth process.