

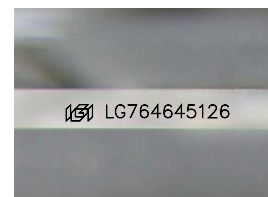
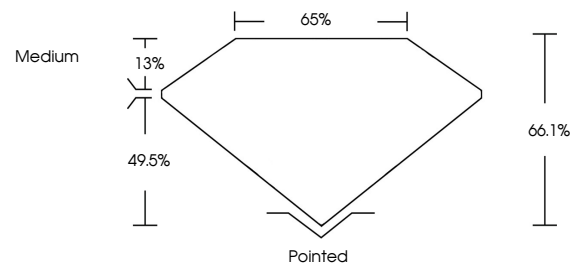


ELECTRONIC COPY

LABORATORY GROWN DIAMOND REPORT

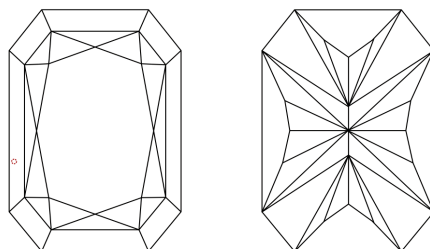
LG764645126
Report verification at igi.org

PROPORTIONS



Sample Image Used

CLARITY CHARACTERISTICS



KEY TO SYMBOLS

Red symbols indicate internal characteristics.
Green symbols indicate external characteristics.

COLOR

D E F G H I J Faint Very Light Light

CLARITY

FL	IF	VVS ¹⁻²	VS ¹⁻²	SI ¹⁻²	I ¹⁻³
Flawless	Internally Flawless	Very Very Slightly Included	Very Slightly Included	Slightly Included	Included

LABORATORY GROWN DIAMOND REPORT



January 13, 2026

IGI Report Number **LG764645126**Description **LABORATORY GROWN DIAMOND**

Shape and Cutting Style

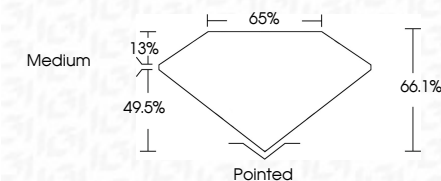
Measurements **10.91 X 7.55 X 4.99 MM**

GRADING RESULTS

Carat Weight **3.58 CARATS**

Color Grade G

Clarity Grade VS 1



ADDITIONAL GRADING INFORMATION

Polish **EXCELLENT**Symmetry **EXCELLENT**

Fluorescence NONI

Inscription(s) LG764645126

Comments: This Laboratory Grown Diamond was created by Chemical Vapor Deposition (CVD) growth process.
Type IIa



© IGI 2020, International Gemological Institute

FD - 10 20

www.igi.org

THIS DOCUMENT WAS PRODUCED WITH THE FOLLOWING SECURITY MEASURES: SPECIAL DOCUMENT PAPER, INK SCREENS, WATERMARK, BACKGROUND DESIGNS, HOLOGRAM AND OTHER SECURITY FEATURES NOT LISTED AND DO EXCEED DOCUMENT SECURITY INDUSTRY GUIDELINE

January 13, 2026	GI Report No. LG764645126	3.58 CARATS	G
	CU CUT CORNERED RECT. MODIFIED BRILLIANT		VS 1
			66.1%
			65%
			Medium
			Pointed
			EXCELLENT
			EXCELLENT
			NONE
			1691 LG764645126

Comments: This is a very young Diamond was created by Chemical Vapor Deposition (CVD) growth process.

Type IIA