



ELECTRONIC COPY

LG764656808
Report verification at igi.org



January 16, 2026

IGI Report Number **LG764656808**

Description **LABORATORY GROWN DIAMOND**

Shape and Cutting Style **CUT CORNERED
RECTANGULAR MODIFIED
BRILLIANT**

Measurements **8.11 X 5.45 X 3.63 MM**

GRADING RESULTS

Carat Weight **1.39 CARAT**

Color Grade **D**

Clarity Grade **VS 1**

January 16, 2026

IGI Report Number **LG764656808**

Description **LABORATORY GROWN DIAMOND**

Shape and Cutting Style **CUT CORNERED RECTANGULAR
MODIFIED BRILLIANT**

Measurements **8.11 X 5.45 X 3.63 MM**

GRADING RESULTS

Carat Weight **1.39 CARAT**

Color Grade **D**

Clarity Grade **VS 1**

ADDITIONAL GRADING INFORMATION

Polish **EXCELLENT**

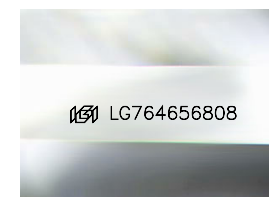
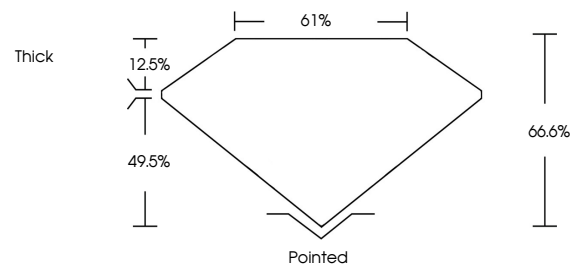
Symmetry **EXCELLENT**

Fluorescence **NONE**

Inscription(s) **IGI LG764656808**

Comments: This Laboratory Grown Diamond was created by Chemical Vapor Deposition (CVD) growth process.
Type IIa

PROPORTIONS



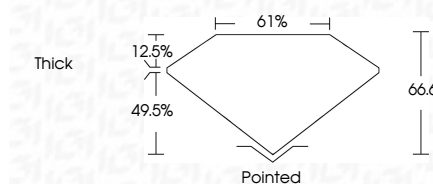
Sample Image Used

COLOR

D E F G H I J Faint Very Light Light

CLARITY

FL	IF	VS ¹⁻²	VS ¹⁻²	SI ¹⁻²	I ¹⁻³
Flawless	Internally Flawless	Very Very Slightly Included	Very Slightly Included	Slightly Included	Included



ADDITIONAL GRADING INFORMATION

Polish **EXCELLENT**

Symmetry **EXCELLENT**

Fluorescence **NONE**

Inscription(s) **IGI LG764656808**

Comments: This Laboratory Grown Diamond was created by Chemical Vapor Deposition (CVD) growth process.
Type IIa



IGI



January 16, 2026
IGI Report No LG764656808
CUT CORNERED RECT. MODIFIED BRILLIANT
8.11 X 5.45 X 3.63 MM
Carat Weight 1.39 CARAT
Color Grade D
Clarity Grade VS 1
Depth 66.6%
Table 61%
Girdle Thick
Culet Pointed
Polish EXCELLENT
Symmetry EXCELLENT
Fluorescence NONE
Inscription(s) IGI LG764656808
Comments: This Laboratory Grown Diamond was created by Chemical Vapor Deposition (CVD) growth process.
Type IIa