



# INTERNATIONAL GEMOLOGICAL INSTITUTE

ELECTRONIC COPY



January 12, 2026

IGI Report Number **LG764669804**

**ROUND BRILLIANT**

**LABORATORY GROWN DIAMOND**

**5.58 - 5.64 X 3.43 MM**

Carat Weight **0.65 CARAT**

Color Grade **D**

Clarity Grade **VS 2**

Cut Grade **IDEAL**

Polish **EXCELLENT**

Symmetry **EXCELLENT**

Fluorescence **NONE**

Inscription(s) **IGI LG764669804**

Comments: This Laboratory Grown Diamond was created by Chemical Vapor Deposition (CVD) growth process. Type IIa

## LABORATORY GROWN DIAMOND REPORT

January 12, 2026

IGI Report Number

**LG764669804**

Description

**LABORATORY GROWN DIAMOND**

Shape and Cutting Style

**ROUND BRILLIANT**

Measurements

**5.58 - 5.64 X 3.43 MM**

### GRADING RESULTS

Carat Weight

**0.65 CARAT**

Color Grade

**D**

Clarity Grade

**VS 2**

Cut Grade

**IDEAL**

### ADDITIONAL GRADING INFORMATION

Polish

**EXCELLENT**

Symmetry

**EXCELLENT**

Fluorescence

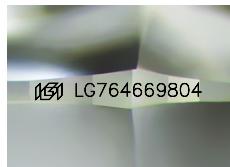
**NONE**

Inscription(s)

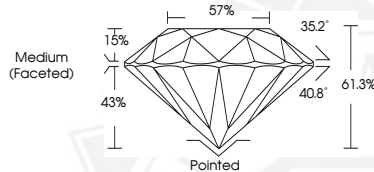
**IGI LG764669804**

Comments: This Laboratory Grown Diamond was created by Chemical Vapor Deposition (CVD) growth process.

Type IIa



Sample Image Used



January 12, 2026

IGI Report Number **LG764669804**

**ROUND BRILLIANT**

**LABORATORY GROWN DIAMOND**

**5.58 - 5.64 X 3.43 MM**

Carat Weight **0.65 CARAT**

Color Grade **D**

Clarity Grade **VS 2**

Cut Grade **IDEAL**

Polish **EXCELLENT**

Symmetry **EXCELLENT**

Fluorescence **NONE**

Inscription(s) **IGI LG764669804**

Comments: This Laboratory Grown Diamond was created by Chemical Vapor Deposition (CVD) growth process. Type IIa



THIS DOCUMENT WAS PRODUCED WITH THE FOLLOWING SECURITY MEASURES: SPECIAL DOCUMENT PAPER, INK SCREENS, WATERMARK BACKGROUND DESIGNS, HOLOGRAM AND OTHER SECURITY FEATURES NOT LISTED AND DO EXCEED DOCUMENT SECURITY INDUSTRY GUIDELINES.

For terms & conditions and to verify this report, please visit [www.igi.org](http://www.igi.org)