



January 9, 2026

IGI Report Number **LG764669838**

**ROUND BRILLIANT  
LABORATORY GROWN DIAMOND  
4.67 - 4.71 X 2.90 MM**

|                |                        |
|----------------|------------------------|
| Carat Weight   | <b>0.39 CARAT</b>      |
| Color Grade    | <b>D</b>               |
| Clarity Grade  | <b>VVS 2</b>           |
| Cut Grade      | <b>IDEAL</b>           |
| Polish         | <b>EXCELLENT</b>       |
| Symmetry       | <b>EXCELLENT</b>       |
| Fluorescence   | <b>NONE</b>            |
| Inscription(s) | <b>IGI LG764669838</b> |

Comments: This Laboratory Grown Diamond was created by Chemical Vapor Deposition (CVD) growth process. Type IIa

**LABORATORY GROWN DIAMOND REPORT**

|                         |                                 |
|-------------------------|---------------------------------|
| January 9, 2026         |                                 |
| IGI Report Number       | <b>LG764669838</b>              |
| Description             | <b>LABORATORY GROWN DIAMOND</b> |
| Shape and Cutting Style | <b>ROUND BRILLIANT</b>          |
| Measurements            | <b>4.67 - 4.71 X 2.90 MM</b>    |

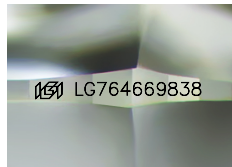
**GRADING RESULTS**

|               |                   |
|---------------|-------------------|
| Carat Weight  | <b>0.39 CARAT</b> |
| Color Grade   | <b>D</b>          |
| Clarity Grade | <b>VVS 2</b>      |
| Cut Grade     | <b>IDEAL</b>      |

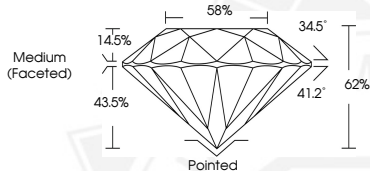
**ADDITIONAL GRADING INFORMATION**

|                |                        |
|----------------|------------------------|
| Polish         | <b>EXCELLENT</b>       |
| Symmetry       | <b>EXCELLENT</b>       |
| Fluorescence   | <b>NONE</b>            |
| Inscription(s) | <b>IGI LG764669838</b> |

Comments: This Laboratory Grown Diamond was created by Chemical Vapor Deposition (CVD) growth process. Type IIa



Sample Image Used



January 9, 2026

IGI Report Number **LG764669838**

**ROUND BRILLIANT  
LABORATORY GROWN DIAMOND  
4.67 - 4.71 X 2.90 MM**

|                |                        |
|----------------|------------------------|
| Carat Weight   | <b>0.39 CARAT</b>      |
| Color Grade    | <b>D</b>               |
| Clarity Grade  | <b>VVS 2</b>           |
| Cut Grade      | <b>IDEAL</b>           |
| Polish         | <b>EXCELLENT</b>       |
| Symmetry       | <b>EXCELLENT</b>       |
| Fluorescence   | <b>NONE</b>            |
| Inscription(s) | <b>IGI LG764669838</b> |

Comments: This Laboratory Grown Diamond was created by Chemical Vapor Deposition (CVD) growth process. Type IIa



THIS DOCUMENT WAS PRODUCED WITH THE FOLLOWING SECURITY MEASURES: SPECIAL DOCUMENT PAPER, INK SCREENS, WATERMARK, BACKGROUND DESIGNS, HOLOGRAM AND OTHER SECURITY FEATURES NOT LISTED AND DO EXCEED DOCUMENT SECURITY INDUSTRY GUIDELINES.