



**ELECTRONIC COPY**

LG764675004  
Report verification at [igi.org](http://igi.org)



January 12, 2026

IGI Report Number **LG764675004**

Description **LABORATORY GROWN DIAMOND**

Shape and Cutting Style **ROUND BRILLIANT**

Measurements **10.11 - 10.14 X 6.09 MM**

**GRADING RESULTS**

Carat Weight **3.77 CARATS**

Color Grade **E**

Clarity Grade **VVS 2**

Cut Grade **IDEAL**

January 12, 2026

IGI Report Number **LG764675004**

Description **LABORATORY GROWN DIAMOND**

Shape and Cutting Style **ROUND BRILLIANT**

Measurements **10.11 - 10.14 X 6.09 MM**

**GRADING RESULTS**

Carat Weight **3.77 CARATS**

Color Grade **E**

Clarity Grade **VVS 2**

Cut Grade **IDEAL**

**ADDITIONAL GRADING INFORMATION**

Polish **EXCELLENT**

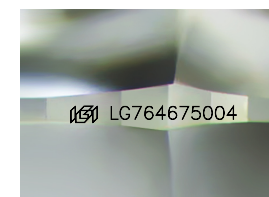
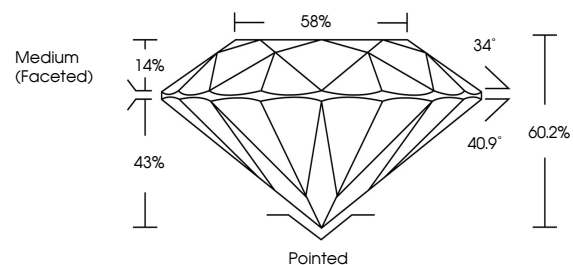
Symmetry **EXCELLENT**

Fluorescence **NONE**

Inscription(s) **IGI LG764675004**

Comments: This Laboratory Grown Diamond was created by Chemical Vapor Deposition (CVD) growth process. Type IIa

**PROPORTIONS**



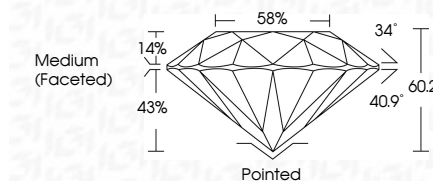
Sample Image Used

**COLOR**

D E F G H I J Faint Very Light Light

**CLARITY**

| FL       | IF                  | VS <sup>1-2</sup>           | VS <sup>1-2</sup>      | SI <sup>1-2</sup> | I <sup>1-3</sup> |
|----------|---------------------|-----------------------------|------------------------|-------------------|------------------|
| Flawless | Internally Flawless | Very Very Slightly Included | Very Slightly Included | Slightly Included | Included         |



**ADDITIONAL GRADING INFORMATION**

Polish **EXCELLENT**

Symmetry **EXCELLENT**

Fluorescence **NONE**

Inscription(s) **IGI LG764675004**

Comments: This Laboratory Grown Diamond was created by Chemical Vapor Deposition (CVD) growth process. Type IIa



**IGI**



|                  |                           |                 |                         |             |               |           |       |       |                  |         |           |           |              |                 |
|------------------|---------------------------|-----------------|-------------------------|-------------|---------------|-----------|-------|-------|------------------|---------|-----------|-----------|--------------|-----------------|
| January 12, 2026 | IGI Report No LG764675004 | ROUND BRILLIANT | 3.77 CARATS             | E           | VVS 2         | IDEAL     | 60.2% | 58%   | Medium (Faceted) | Pointed | EXCELLENT | EXCELLENT | NONE         | IGI LG764675004 |
|                  |                           |                 | 10.11 - 10.14 X 6.09 MM |             |               |           |       |       |                  |         |           |           |              |                 |
|                  |                           |                 | Carat Weight            | Color Grade | Clarity Grade | Cut Grade | Depth | Table | Girdle           | Culet   | Polish    | Symmetry  | Fluorescence | Inscription(s)  |
|                  |                           |                 |                         |             |               |           |       |       |                  |         |           |           |              |                 |

Comments: This Laboratory Grown Diamond was created by Chemical Vapor Deposition (CVD) growth process. Type IIa