



**INTERNATIONAL
GEMOLOGICAL
INSTITUTE**

LABORATORY GROWN DIAMOND REPORT

February 3, 2026
 IGI Report Number **LG764675390**
 Description **LABORATORY GROWN DIAMOND**
 Shape and Cutting Style **OVAL BRILLIANT**
 Measurements **5.82 X 4.00 X 2.42 MM**

GRADING RESULTS

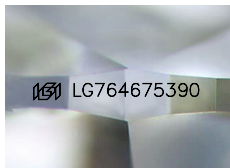
Carat Weight **0.36 CARAT**
 Color Grade **D**
 Clarity Grade **INTERNALLY FLAWLESS**
 Cut Grade **VERY GOOD**

ADDITIONAL GRADING INFORMATION

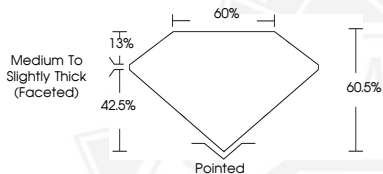
Polish **EXCELLENT**
 Symmetry **EXCELLENT**
 Fluorescence **NONE**
 Inscription(s) **IGI LG764675390**

Comments: As Grown - No indication of post-growth treatment. This Laboratory Grown Diamond was created by High Pressure High Temperature (HPHT) growth process. Type II

ELECTRONIC COPY



Sample Image Used



February 3, 2026
 IGI Report Number **LG764675390**
OVAL BRILLIANT
LABORATORY GROWN DIAMOND
5.82 X 4.00 X 2.42 MM
 Carat Weight **0.36 CARAT**
 Color Grade **D**
 Clarity Grade **I.F.**
 Cut Grade **VERY GOOD**
 Polish **EXCELLENT**
 Symmetry **EXCELLENT**
 Fluorescence **NONE**
 Inscription(s) **IGI LG764675390**

Comments: As Grown - No indication of post-growth treatment. This Laboratory Grown Diamond was created by High Pressure High Temperature (HPHT) growth process. Type II



February 3, 2026
 IGI Report Number **LG764675390**
OVAL BRILLIANT
LABORATORY GROWN DIAMOND
5.82 X 4.00 X 2.42 MM
 Carat Weight **0.36 CARAT**
 Color Grade **D**
 Clarity Grade **I.F.**
 Cut Grade **VERY GOOD**
 Polish **EXCELLENT**
 Symmetry **EXCELLENT**
 Fluorescence **NONE**
 Inscription(s) **IGI LG764675390**

Comments: As Grown - No indication of post-growth treatment. This Laboratory Grown Diamond was created by High Pressure High Temperature (HPHT) growth process. Type II

THIS DOCUMENT WAS PRODUCED WITH THE FOLLOWING SECURITY MEASURES: SPECIAL DOCUMENT PAPER, INK SCREENS, WATERMARK, BACKGROUND DESIGNS, HOLOGRAM AND OTHER SECURITY FEATURES NOT LISTED AND DO EXCEED DOCUMENT SECURITY INDUSTRY GUIDELINES.

For terms & conditions and to verify this report, please visit www.igi.org