



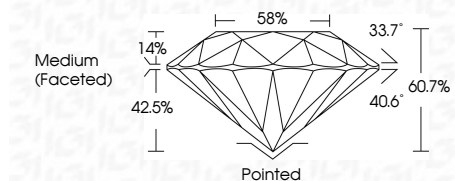
ELECTRONIC COPY

LG764675766 Report verification at igi.org



January 13, 2026 IGI Report Number LG764675766 Description LABORATORY GROWN DIAMOND Shape and Cutting Style ROUND BRILLIANT Measurements 12.31 - 12.35 X 7.48 MM

GRADING RESULTS Carat Weight 7.05 CARATS Color Grade F Clarity Grade VVS 2 Cut Grade IDEAL



ADDITIONAL GRADING INFORMATION Polish EXCELLENT Symmetry EXCELLENT Fluorescence NONE Inscription(s) IGI LG764675766 Comments: This Laboratory Grown Diamond was created by Chemical Vapor Deposition (CVD) growth process. Type IIa



January 13, 2026 IGI Report No LG764675766 ROUND BRILLIANT 12.31 - 12.35 X 7.48 MM 7.05 CARATS F VVS 2 IDEAL 60.7% 58% Medium (Faceted) Pointed EXCELLENT EXCELLENT NONE IGI LG764675766 Comments: This Laboratory Grown Diamond was created by Chemical Vapor Deposition (CVD) growth process. Type IIa

LABORATORY GROWN DIAMOND REPORT

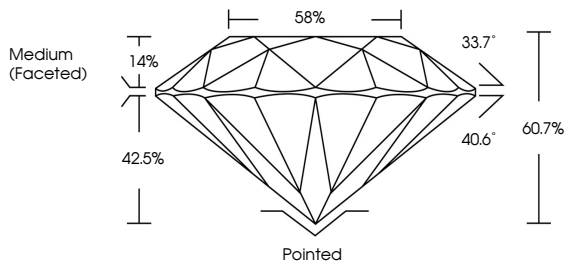
January 13, 2026 IGI Report Number LG764675766 Description LABORATORY GROWN DIAMOND Shape and Cutting Style ROUND BRILLIANT Measurements 12.31 - 12.35 X 7.48 MM

GRADING RESULTS Carat Weight 7.05 CARATS Color Grade F Clarity Grade VVS 2 Cut Grade IDEAL

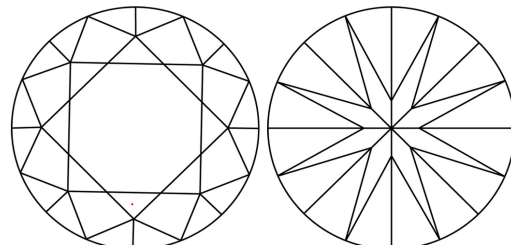
ADDITIONAL GRADING INFORMATION Polish EXCELLENT Symmetry EXCELLENT Fluorescence NONE Inscription(s) IGI LG764675766

Comments: This Laboratory Grown Diamond was created by Chemical Vapor Deposition (CVD) growth process. Type IIa

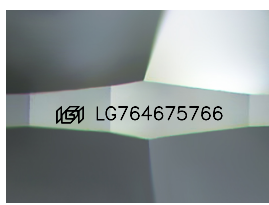
PROPORTIONS



CLARITY CHARACTERISTICS



KEY TO SYMBOLS Red symbols indicate internal characteristics. Green symbols indicate external characteristics.



Sample Image Used

Table for COLOR grading: D, E, F, G, H, I, J, Faint, Very Light, Light

Table for CLARITY grading: FL, IF, VVS 1-2, VS 1-2, SI 1-2, I 1-3, Flawless, Internally Flawless, Very Very Slightly Included, Very Slightly Included, Slightly Included, Included

