



ELECTRONIC COPY

LG764680305
Report verification at igi.org



February 2, 2026

IGI Report Number **LG764680305**

Description **LABORATORY GROWN DIAMOND**

Shape and Cutting Style **OVAL BRILLIANT**

Measurements **11.69 X 8.17 X 5.04 MM**

GRADING RESULTS

Carat Weight **3.01 CARATS**

Color Grade **H**

Clarity Grade **VVS 2**

February 2, 2026

IGI Report Number **LG764680305**

Description **LABORATORY GROWN DIAMOND**

Shape and Cutting Style **OVAL BRILLIANT**

Measurements **11.69 X 8.17 X 5.04 MM**

GRADING RESULTS

Carat Weight **3.01 CARATS**

Color Grade **H**

Clarity Grade **VVS 2**

ADDITIONAL GRADING INFORMATION

Polish **EXCELLENT**

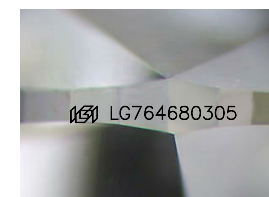
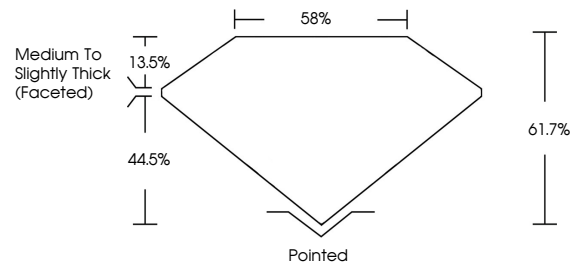
Symmetry **EXCELLENT**

Fluorescence **NONE**

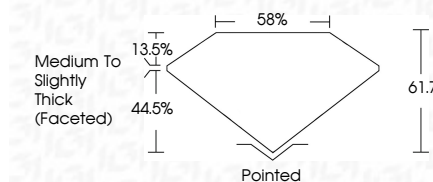
Inscription(s) **IGI LG764680305**

Comments: This Laboratory Grown Diamond was created by Chemical Vapor Deposition (CVD) growth process. Type IIa

PROPORTIONS



Sample Image Used



COLOR

D E F G H I J Faint Very Light Light

CLARITY

FL	IF	VS ¹⁻²	VS ¹⁻²	SI ¹⁻²	I ¹⁻³
Flawless	Internally Flawless	Very Very Slightly Included	Very Slightly Included	Slightly Included	Included

ADDITIONAL GRADING INFORMATION

Polish **EXCELLENT**

Symmetry **EXCELLENT**

Fluorescence **NONE**

Inscription(s) **IGI LG764680305**

Comments: This Laboratory Grown Diamond was created by Chemical Vapor Deposition (CVD) growth process. Type IIa



IGI



February 2, 2026
IGI Report No LG764680305
OVAL BRILLIANT
11.69 X 8.17 X 5.04 MM
3.01 CARATS
H
Color Grade
VVS 2
Clarity Grade
61.7%
85%
Medium to Slightly Thick (Faceted)
Pointed
Polish
EXCELLENT
Symmetry
EXCELLENT
Fluorescence
NONE
Inscription(s)
IGI LG764680305

Comments: This Laboratory Grown Diamond was created by Chemical Vapor Deposition (CVD) growth process. Type IIa