



# INTERNATIONAL GEMOLOGICAL INSTITUTE

## LABORATORY GROWN DIAMOND REPORT

January 16, 2026

IGI Report Number

LG764689756

Description

LABORATORY GROWN DIAMOND

Shape and Cutting Style

PEAR BRILLIANT

Measurements

6.37 X 3.71 X 2.22 MM

### GRADING RESULTS

Carat Weight

0.31 CARAT

Color Grade

D

Clarity Grade

SI 1

### ADDITIONAL GRADING INFORMATION

Polish

VERY GOOD

Symmetry

GOOD

Fluorescence

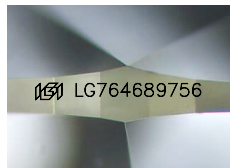
NONE

Inscription(s)

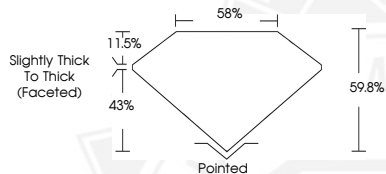
LG764689756

Comments: This Laboratory Grown Diamond was created by Chemical Vapor Deposition (CVD) growth process. Type IIa

ELECTRONIC COPY



Sample Image Used



January 16, 2026

IGI Report Number LG764689756

PEAR BRILLIANT

LABORATORY GROWN DIAMOND

6.37 X 3.71 X 2.22 MM

Carat Weight 0.31 CARAT

Color Grade D

Clarity Grade SI 1

Polish VERY GOOD

Symmetry GOOD

Fluorescence NONE

Inscription(s) LG764689756

Comments: This Laboratory Grown Diamond was created by Chemical Vapor Deposition (CVD) growth process. Type IIa



January 16, 2026

IGI Report Number LG764689756

PEAR BRILLIANT

LABORATORY GROWN DIAMOND

6.37 X 3.71 X 2.22 MM

Carat Weight 0.31 CARAT

Color Grade D

Clarity Grade SI 1

Polish VERY GOOD

Symmetry GOOD

Fluorescence NONE

Inscription(s) LG764689756

Comments: This Laboratory Grown Diamond was created by Chemical Vapor Deposition (CVD) growth process. Type IIa



THIS DOCUMENT WAS PRODUCED WITH THE FOLLOWING SECURITY MEASURES: SPECIAL DOCUMENT PAPER, INK SCREENS, WATERMARK, BACKGROUND DESIGNS, HOLOGRAM AND OTHER SECURITY FEATURES NOT LISTED AND DO EXCEED DOCUMENT SECURITY INDUSTRY GUIDELINES.

For terms & conditions and to verify this report, please visit [www.igi.org](http://www.igi.org)