



ELECTRONIC COPY

LG764698214
Report verification at igi.org



February 23, 2026
IGI Report Number **LG764698214**
Description **LABORATORY GROWN DIAMOND**
Shape and Cutting Style **CUSHION MODIFIED BRILLIANT**
Measurements **10.32 X 8.03 X 5.53 MM**
GRADING RESULTS
Carat Weight **4.19 CARATS**
Color Grade **FANCY DEEP PINK**
Clarity Grade **VS 2**

February 23, 2026
IGI Report Number **LG764698214**
Description **LABORATORY GROWN DIAMOND**
Shape and Cutting Style **CUSHION MODIFIED BRILLIANT**
Measurements **10.32 X 8.03 X 5.53 MM**

GRADING RESULTS

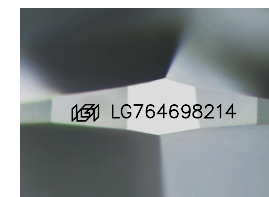
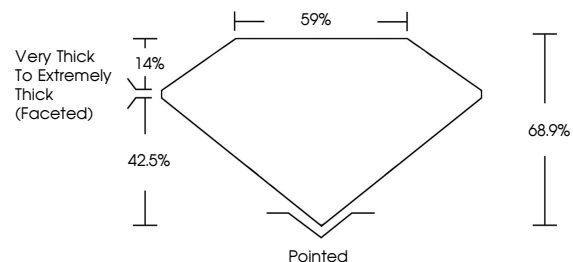
Carat Weight **4.19 CARATS**
Color Grade **FANCY DEEP PINK**
Clarity Grade **VS 2**

ADDITIONAL GRADING INFORMATION

Polish **EXCELLENT**
Symmetry **EXCELLENT**
Fluorescence **VERY SLIGHT**
Inscription(s) **IGI LG764698214**

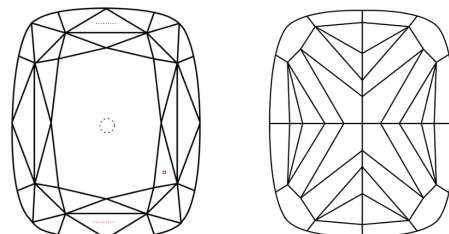
Comments: This Laboratory Grown Diamond was created by Chemical Vapor Deposition (CVD) growth process.
Indications of post-growth treatment.

PROPORTIONS



Sample Image Used

CLARITY CHARACTERISTICS



KEY TO SYMBOLS

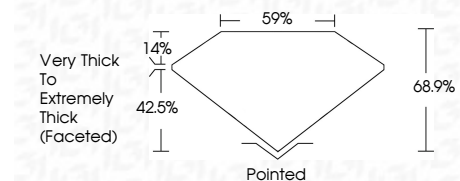
Red symbols indicate internal characteristics.
Green symbols indicate external characteristics.

COLOR

D E F G H I J Faint Very Light Light

CLARITY

FL	IF	VS ¹⁻²	VS ¹⁻²	SI ¹⁻²	I ¹⁻³
Flawless	Internally Flawless	Very Very Slightly Included	Very Slightly Included	Slightly Included	Included



ADDITIONAL GRADING INFORMATION

Polish **EXCELLENT**
Symmetry **EXCELLENT**
Fluorescence **VERY SLIGHT**
Inscription(s) **IGI LG764698214**
Comments: This Laboratory Grown Diamond was created by Chemical Vapor Deposition (CVD) growth process.
Indications of post-growth treatment.



February 23, 2026
IGI Report No **LG764698214**
CUSHION MODIFIED BRILLIANT
10.32 X 8.03 X 5.53 MM
Carat Weight **4.19 CARATS**
Color Grade **FANCY DEEP PINK**
Clarity Grade **VS 2**
Depth **68.9%**
Table **59%**
Girdle **Very Thick to Extremely Thick (Faceted)**
Culet **Pointed**
Polish **EXCELLENT**
Symmetry **EXCELLENT**
Fluorescence **VERY SLIGHT**
Inscription(s) **IGI LG764698214**
Comments: This Laboratory Grown Diamond was created by Chemical Vapor Deposition (CVD) growth process.
Indications of post-growth treatment.