



**ELECTRONIC COPY**

LG765601776  
Report verification at igi.org



January 30, 2026

IGI Report Number **LG765601776**

Description **LABORATORY GROWN DIAMOND**

Shape and Cutting Style **CUSHION ANTIQUE BRILLIANT**

Measurements **10.34 X 6.21 X 3.87 MM**

**GRADING RESULTS**

Carat Weight **2.05 CARATS**

Color Grade **G**

Clarity Grade **VVS 2**

January 30, 2026  
IGI Report Number **LG765601776**  
Description **LABORATORY GROWN DIAMOND**  
Shape and Cutting Style **CUSHION ANTIQUE BRILLIANT**  
Measurements **10.34 X 6.21 X 3.87 MM**

**GRADING RESULTS**

Carat Weight **2.05 CARATS**

Color Grade **G**

Clarity Grade **VVS 2**

**ADDITIONAL GRADING INFORMATION**

Polish **EXCELLENT**

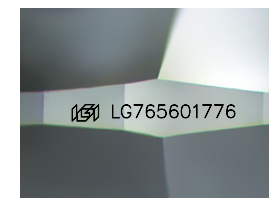
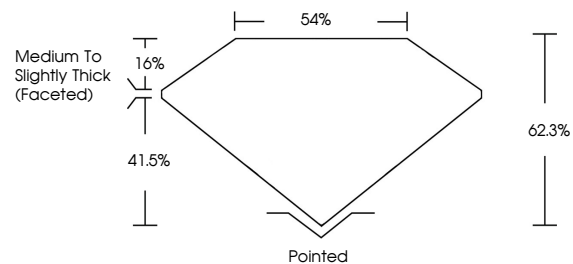
Symmetry **EXCELLENT**

Fluorescence **NONE**

Inscription(s) **IGI LG765601776**

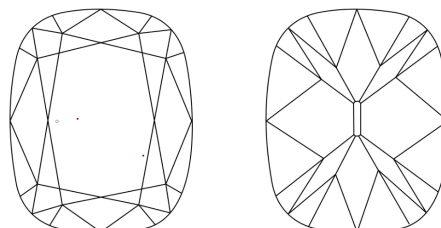
Comments: This Laboratory Grown Diamond was created by Chemical Vapor Deposition (CVD) growth process.  
Type IIa

**PROPORTIONS**



Sample Image Used

**CLARITY CHARACTERISTICS**



**KEY TO SYMBOLS**

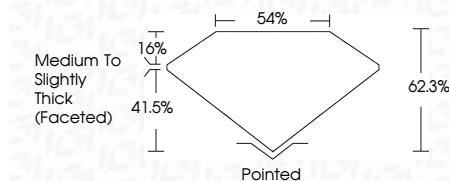
Red symbols indicate internal characteristics.  
Green symbols indicate external characteristics.

**COLOR**

D E F G H I J Faint Very Light Light

**CLARITY**

FL	IF	VVS <sup>1-2</sup>	VS <sup>1-2</sup>	SI <sup>1-2</sup>	I <sup>1-3</sup>
Flawless	Internally Flawless	Very Very Slightly Included	Very Slightly Included	Slightly Included	Included



**ADDITIONAL GRADING INFORMATION**

Polish **EXCELLENT**

Symmetry **EXCELLENT**

Fluorescence **NONE**

Inscription(s) **IGI LG765601776**

Comments: This Laboratory Grown Diamond was created by Chemical Vapor Deposition (CVD) growth process.  
Type IIa



January 30, 2026  
IGI Report No LG765601776  
CUSHION ANTIQUE BRILLIANT  
10.34 X 6.21 X 3.87 MM  
Carat Weight 2.05 CARATS  
Color Grade G  
Clarity Grade VVS 2  
Table 54%  
Girdle 41.5%  
Culet Medium to Slightly Thick (Faceted)  
Polish Pointed  
Symmetry EXCELLENT  
Fluorescence NONE  
Inscription(s) IGI LG765601776  
Comments: This Laboratory Grown Diamond was created by Chemical Vapor Deposition (CVD) growth process.  
Type IIa