



ELECTRONIC COPY

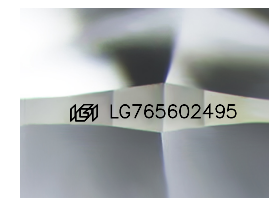
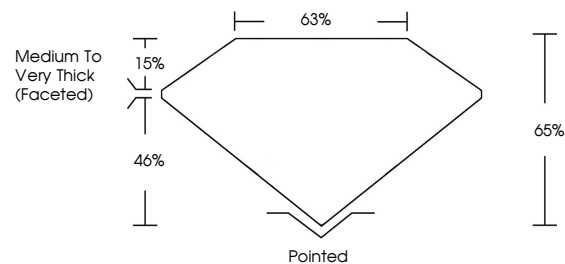
LG765602495
Report verification at igi.org



February 6, 2026
IGI Report Number **LG765602495**
Description **LABORATORY GROWN DIAMOND**
Shape and Cutting Style **SQUARE CUSHION MODIFIED BRILLIANT**
Measurements **8.50 X 8.45 X 5.49 MM**
GRADING RESULTS
Carat Weight **3.53 CARATS**
Color Grade **E**
Clarity Grade **VS 2**

February 6, 2026
IGI Report Number **LG765602495**
Description **LABORATORY GROWN DIAMOND**
Shape and Cutting Style **SQUARE CUSHION MODIFIED BRILLIANT**
Measurements **8.50 X 8.45 X 5.49 MM**

PROPORTIONS

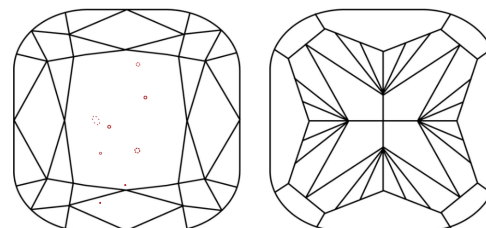


Sample Image Used

GRADING RESULTS

Carat Weight **3.53 CARATS**
Color Grade **E**
Clarity Grade **VS 2**

CLARITY CHARACTERISTICS



KEY TO SYMBOLS

Red symbols indicate internal characteristics.
Green symbols indicate external characteristics.

ADDITIONAL GRADING INFORMATION

Polish **EXCELLENT**
Symmetry **EXCELLENT**
Fluorescence **NONE**
Inscription(s) **IGI LG765602495**

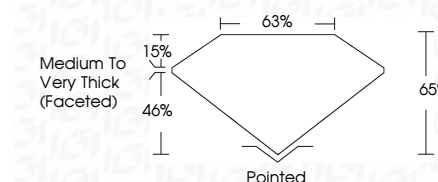
Comments: This Laboratory Grown Diamond was created by Chemical Vapor Deposition (CVD) growth process.
Type IIa

COLOR

D E F G H I J Faint Very Light Light

CLARITY

FL	IF	VS ¹⁻²	VS ¹⁻²	SI ¹⁻²	I ¹⁻³
Flawless	Internally Flawless	Very Very Slightly Included	Very Slightly Included	Slightly Included	Included



ADDITIONAL GRADING INFORMATION

Polish **EXCELLENT**
Symmetry **EXCELLENT**
Fluorescence **NONE**
Inscription(s) **IGI LG765602495**
Comments: This Laboratory Grown Diamond was created by Chemical Vapor Deposition (CVD) growth process.
Type IIa



IGI



February 6, 2026
IGI Report No **LG765602495**
SQUARE CUSHION MODIFIED BRILLIANT
3.53 CARATS
E
Carat Weight **3.53 CARATS**
Color Grade **E**
Clarity Grade **VS 2**
Depth **65%**
Table **63%**
Girdle **Medium to Very Thick (Faceted)**
Culet **Pointed**
Polish **EXCELLENT**
Symmetry **EXCELLENT**
Fluorescence **NONE**
Inscription(s) **IGI LG765602495**

Comments: This Laboratory Grown Diamond was created by Chemical Vapor Deposition (CVD) growth process.
Type IIa