



**ELECTRONIC COPY**

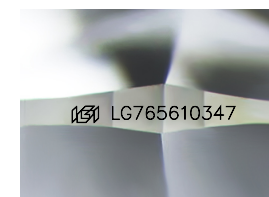
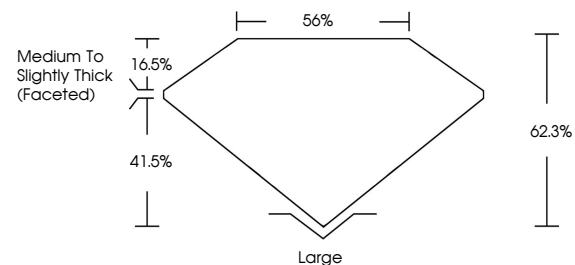
LG765610347  
Report verification at igi.org



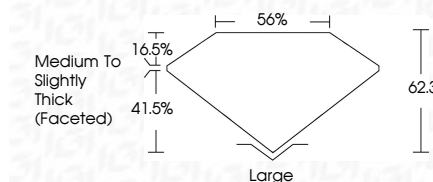
January 10, 2026  
IGI Report Number **LG765610347**  
Description **LABORATORY GROWN DIAMOND**  
Shape and Cutting Style **CUSHION MODIFIED BRILLIANT**  
Measurements **10.63 X 8.00 X 4.98 MM**  
**GRADING RESULTS**  
Carat Weight **3.18 CARATS**  
Color Grade **D**  
Clarity Grade **VVS 1**

January 10, 2026  
IGI Report Number **LG765610347**  
Description **LABORATORY GROWN DIAMOND**  
Shape and Cutting Style **CUSHION MODIFIED BRILLIANT**  
Measurements **10.63 X 8.00 X 4.98 MM**  
**GRADING RESULTS**  
Carat Weight **3.18 CARATS**  
Color Grade **D**  
Clarity Grade **VVS 1**

**PROPORTIONS**



Sample Image Used



**ADDITIONAL GRADING INFORMATION**

Polish **EXCELLENT**  
Symmetry **EXCELLENT**  
Fluorescence **NONE**  
Inscription(s) **IGI LG765610347**

Comments: This Laboratory Grown Diamond was created by Chemical Vapor Deposition (CVD) growth process.  
Type IIa

**ADDITIONAL GRADING INFORMATION**

Polish **EXCELLENT**  
Symmetry **EXCELLENT**  
Fluorescence **NONE**  
Inscription(s) **IGI LG765610347**  
Comments: This Laboratory Grown Diamond was created by Chemical Vapor Deposition (CVD) growth process.  
Type IIa

**COLOR**

D E F G H I J Faint Very Light Light

**CLARITY**

FL	IF	VS <sup>1-2</sup>	VS <sup>1-2</sup>	SI <sup>1-2</sup>	I <sup>1-3</sup>
Flawless	Internally Flawless	Very Very Slightly Included	Very Slightly Included	Slightly Included	Included



**IGI**



January 10, 2026  
IGI Report No **LG765610347**  
**CUSHION MODIFIED BRILLIANT**  
**10.63 X 8.00 X 4.98 MM**  
Carat Weight **3.18 CARATS**  
Color Grade **D**  
Clarity Grade **VVS 1**  
Depth **62.3%**  
Table **56%**  
Girdle **Medium to Slightly Thick (Faceted)**  
Culet **Large**  
Polish **EXCELLENT**  
Symmetry **EXCELLENT**  
Fluorescence **NONE**  
Inscription(s) **IGI LG765610347**

Comments: This Laboratory Grown Diamond was created by Chemical Vapor Deposition (CVD) growth process.  
Type IIa