



ELECTRONIC COPY

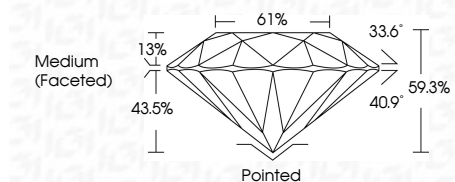
LG765615903
Report verification at igi.org



January 13, 2026
IGI Report Number **LG765615903**
Description **LABORATORY GROWN DIAMOND**
Shape and Cutting Style **ROUND BRILLIANT**
Measurements **9.28 - 9.34 X 5.52 MM**

GRADING RESULTS

Carat Weight **2.91 CARATS**
Color Grade **E**
Clarity Grade **VVS 2**
Cut Grade **EXCELLENT**

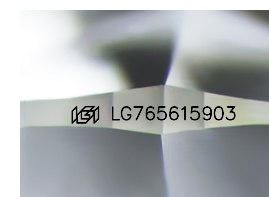


ADDITIONAL GRADING INFORMATION

Polish **EXCELLENT**
Symmetry **EXCELLENT**
Fluorescence **NONE**
Inscription(s) **IGI LG765615903**
Comments: This Laboratory Grown Diamond was created by Chemical Vapor Deposition (CVD) growth process. Type IIa

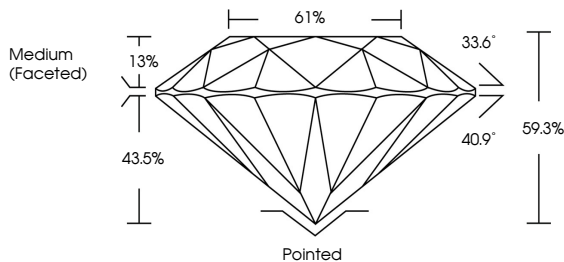


January 13, 2026
IGI Report No LG765615903
ROUND BRILLIANT
9.28 - 9.34 X 5.52 MM
2.91 CARATS
E
VVS 2
EXCELLENT
EXCELLENT
61%
Medium (Faceted)
Pointed
EXCELLENT
EXCELLENT
NONE
IGI LG765615903
Comments: This Laboratory Grown Diamond was created by Chemical Vapor Deposition (CVD) growth process. Type IIa

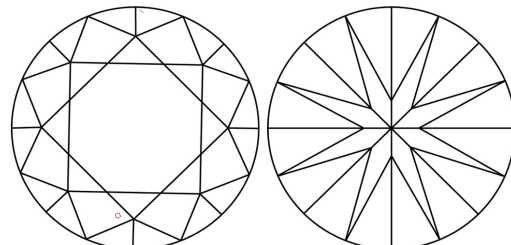


Sample Image Used

PROPORTIONS



CLARITY CHARACTERISTICS



KEY TO SYMBOLS

Red symbols indicate internal characteristics.
Green symbols indicate external characteristics.

COLOR

D	E	F	G	H	I	J	Faint	Very Light	Light
---	---	---	---	---	---	---	-------	------------	-------

CLARITY

FL	IF	VVS ¹⁻²	VS ¹⁻²	SI ¹⁻²	I ¹⁻³
Flawless	Internally Flawless	Very Very Slightly Included	Very Slightly Included	Slightly Included	Included

