



ELECTRONIC COPY

LG765628397
Report verification at igi.org



January 17, 2026

IGI Report Number **LG765628397**

Description **LABORATORY GROWN DIAMOND**

Shape and Cutting Style **PRINCESS CUT**

Measurements **7.01 X 6.77 X 4.75 MM**

GRADING RESULTS

Carat Weight **2.01 CARATS**

Color Grade **FANCY INTENSE PINK**

Clarity Grade **VS 1**

January 17, 2026
IGI Report Number **LG765628397**
Description **LABORATORY GROWN DIAMOND**
Shape and Cutting Style **PRINCESS CUT**
Measurements **7.01 X 6.77 X 4.75 MM**

GRADING RESULTS

Carat Weight **2.01 CARATS**

Color Grade **FANCY INTENSE PINK**

Clarity Grade **VS 1**

ADDITIONAL GRADING INFORMATION

Polish **EXCELLENT**

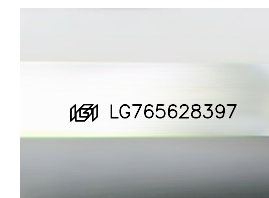
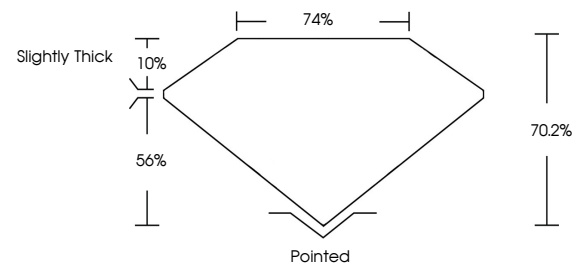
Symmetry **EXCELLENT**

Fluorescence **SLIGHT**

Inscription(s) **LG765628397**

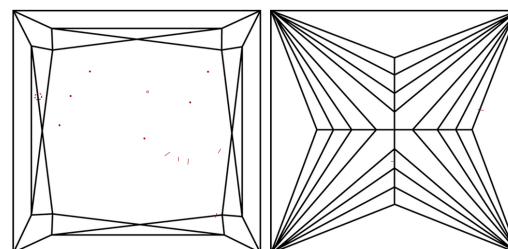
Comments: This Laboratory Grown Diamond was created by Chemical Vapor Deposition (CVD) growth process. Indications of post-growth treatment.

PROPORTIONS



Sample Image Used

CLARITY CHARACTERISTICS



KEY TO SYMBOLS

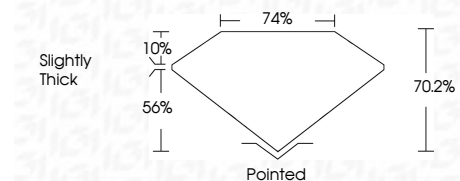
Red symbols indicate internal characteristics.
Green symbols indicate external characteristics.

COLOR

D E F G H I J Faint Very Light Light

CLARITY

FL	IF	VS ¹⁻²	VS ¹⁻²	SI ¹⁻²	I ¹⁻³
Flawless	Internally Flawless	Very Very Slightly Included	Very Slightly Included	Slightly Included	Included



ADDITIONAL GRADING INFORMATION

Polish **EXCELLENT**

Symmetry **EXCELLENT**

Fluorescence **SLIGHT**

Inscription(s) **LG765628397**

Comments: This Laboratory Grown Diamond was created by Chemical Vapor Deposition (CVD) growth process. Indications of post-growth treatment.



IGI



January 17, 2026
IGI Report No. **LG765628397**
PRINCESS CUT

2.01 CARATS
Carat Weight
FANCY INTENSE PINK
Color Grade

VS 1
Clarity Grade
70.2%
Table
74%
Girdle
Slightly Thick

Pointed
EXCELLENT
Polish
EXCELLENT
Symmetry
SLIGHT
Fluorescence
Inscription(s)
 LG765628397

Comments: This Laboratory Grown Diamond was created by Chemical Vapor Deposition (CVD) growth process. Indications of post-growth treatment.