



ELECTRONIC COPY

LG765631484
Report verification at igi.org



March 25, 2026
IGI Report Number **LG765631484**
Description **LABORATORY GROWN DIAMOND**
Shape and Cutting Style **SQUARE CUSHION MODIFIED BRILLIANT**
Measurements **9.22 X 9.05 X 5.50 MM**
GRADING RESULTS
Carat Weight **4.04 CARATS**
Color Grade **FANCY VIVID YELLOW**
Clarity Grade **VS 2**

March 25, 2026
IGI Report Number **LG765631484**
Description **LABORATORY GROWN DIAMOND**
Shape and Cutting Style **SQUARE CUSHION MODIFIED BRILLIANT**
Measurements **9.22 X 9.05 X 5.50 MM**

GRADING RESULTS

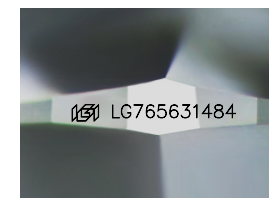
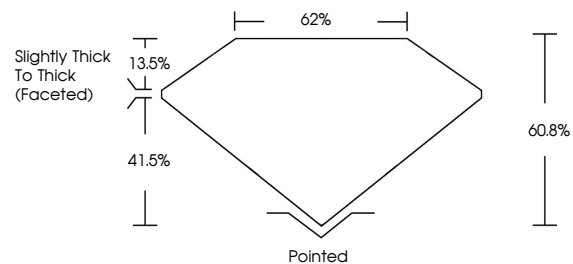
Carat Weight **4.04 CARATS**
Color Grade **FANCY VIVID YELLOW**
Clarity Grade **VS 2**

ADDITIONAL GRADING INFORMATION

Polish **EXCELLENT**
Symmetry **EXCELLENT**
Fluorescence **NONE**
Inscription(s) **IGI LG765631484**

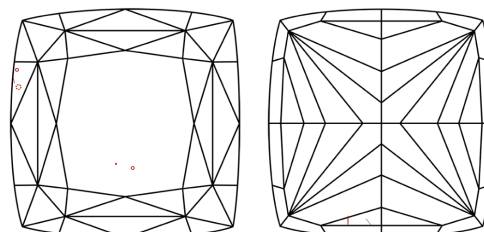
Comments: This Laboratory Grown Diamond was created by Chemical Vapor Deposition (CVD) growth process.

PROPORTIONS



Sample Image Used

CLARITY CHARACTERISTICS



KEY TO SYMBOLS

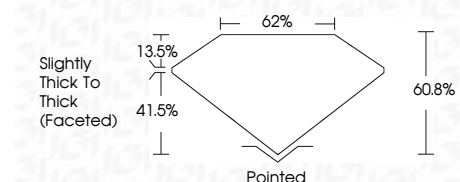
Red symbols indicate internal characteristics.
Green symbols indicate external characteristics.

COLOR

D E F G H I J Faint Very Light Light

CLARITY

| FL | IF | VS ¹⁻² | VS ¹⁻² | SI ¹⁻² | I ¹⁻³ |
|----------|---------------------|-----------------------------|------------------------|-------------------|------------------|
| Flawless | Internally Flawless | Very Very Slightly Included | Very Slightly Included | Slightly Included | Included |



ADDITIONAL GRADING INFORMATION

Polish **EXCELLENT**
Symmetry **EXCELLENT**
Fluorescence **NONE**
Inscription(s) **IGI LG765631484**
Comments: This Laboratory Grown Diamond was created by Chemical Vapor Deposition (CVD) growth process.



March 25, 2026
IGI Report No **LG765631484**
SQUARE CUSHION MODIFIED BRILLIANT
4.04 CARATS
Carat Weight **FANCY VIVID YELLOW**
Color Grade **VS 2**
Clarity Grade **60.8%**
Depth **62%**
Table **Slightly Thick To Thick (Faceted)**
Girdle **Pointed**
Culet **EXCELLENT**
Polish **EXCELLENT**
Symmetry **EXCELLENT**
Fluorescence **NONE**
Inscription(s) **IGI LG765631484**
Comments: This Laboratory Grown Diamond was created by Chemical Vapor Deposition (CVD) growth process.