



**LABORATORY GROWN DIAMOND REPORT**

January 12, 2026  
 IGI Report Number **LG765633718**  
 Description **LABORATORY GROWN DIAMOND**  
 Shape and Cutting Style **ROUND BRILLIANT**  
 Measurements **4.75 - 4.83 X 2.96 MM**

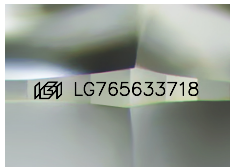
**GRADING RESULTS**

Carat Weight **0.41 CARAT**  
 Color Grade **D**  
 Clarity Grade **VVS 1**  
 Cut Grade **IDEAL**

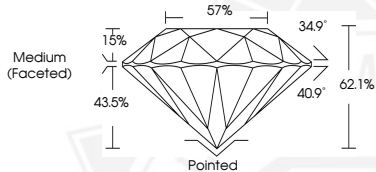
**ADDITIONAL GRADING INFORMATION**

Polish **EXCELLENT**  
 Symmetry **EXCELLENT**  
 Fluorescence **NONE**  
 Inscription(s) **IGI LG765633718**

Comments: This Laboratory Grown Diamond was created by Chemical Vapor Deposition (CVD) growth process. Type IIa



Sample Image Used



January 12, 2026  
 IGI Report Number **LG765633718**  
**ROUND BRILLIANT**  
**LABORATORY GROWN DIAMOND**  
**4.75 - 4.83 X 2.96 MM**  
**0.41 CARAT**  
**D**  
**VVS 1**  
**IDEAL**  
**EXCELLENT**  
**EXCELLENT**  
**NONE**  
**IGI LG765633718**  
 Comments: This Laboratory Grown Diamond was created by Chemical Vapor Deposition (CVD) growth process. Type IIa



January 12, 2026  
 IGI Report Number **LG765633718**  
**ROUND BRILLIANT**  
**LABORATORY GROWN DIAMOND**  
**4.75 - 4.83 X 2.96 MM**  
**0.41 CARAT**  
**D**  
**VVS 1**  
**IDEAL**  
**EXCELLENT**  
**EXCELLENT**  
**NONE**  
**IGI LG765633718**  
 Comments: This Laboratory Grown Diamond was created by Chemical Vapor Deposition (CVD) growth process. Type IIa

THIS DOCUMENT WAS PRODUCED WITH THE FOLLOWING SECURITY MEASURES: SPECIAL DOCUMENT PAPER, INK SCREENS, WATERMARK, BACKGROUND DESIGNS, HOLOGRAM AND OTHER SECURITY FEATURES NOT LISTED AND DO EXCEED DOCUMENT SECURITY INDUSTRY GUIDELINES.