



ELECTRONIC COPY

LABORATORY GROWN DIAMOND REPORT

LG765639486
Report verification at igi.org

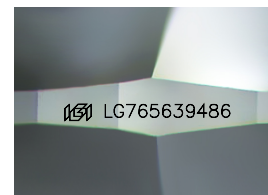
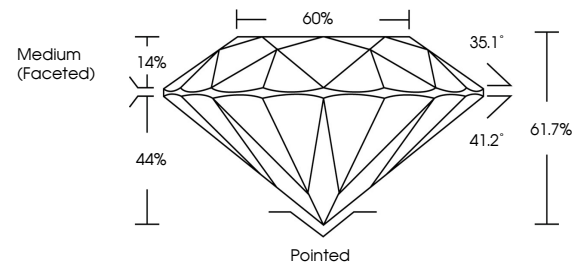
January 13, 2026	
IGI Report Number	LG765639486
Description	LABORATORY GROWN DIAMOND
Shape and Cutting Style	ROUND BRILLIANT
Measurements	8.07 - 8.11 X 4.99 MM
GRADING RESULTS	
Carat Weight	2.02 CARATS
Color Grade	E
Clarity Grade	VS 2
Cut Grade	IDEAL

ADDITIONAL GRADING INFORMATION

Polish	EXCELLENT
Symmetry	EXCELLENT
Fluorescence	NONE
Inscription(s)	 LG765639486

Comments: This Laboratory Grown Diamond was created by Chemical Vapor Deposition (CVD) growth process.
Type IIa

PROPORTIONS



Sample Image Used

COLOR

D E F G H I J Faint Very Light Light

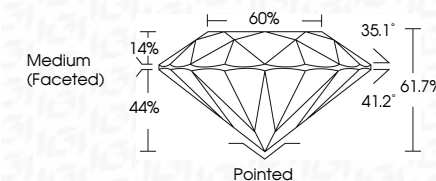
CLARITY

FL	IF	VVS ¹⁻²	VS ¹⁻²	SI ¹⁻²	I ¹⁻³
Flawless	Internally Flawless	Very Very Slightly Included	Very Slightly Included	Slightly Included	Included

LABORATORY GROWN DIAMOND REPORT



January 13, 2016	
IGI Report Number	LG765639486
Description	LABORATORY GROWN DIAMOND
Shape and Cutting Style	ROUND BRILLIANT
Measurements	8.07 - 8.11 X 4.99 MM
GRADING RESULTS	
Carat Weight	2.02 CARATS
Color Grade	E
Clarity Grade	VS 2
Cut Grade	IDEAL



ADDITIONAL GRADING INFORMATION

Polish	EXCELLENT
Symmetry	EXCELLENT
Fluorescence	NONE
Inscription(s)	 LG765639486
<p>Comments: This Laboratory Grown Diamond was created by Chemical Vapor Deposition (CVD) growth process.</p> <p>Type IIa</p>	



IG



© IGI 2020, International Gemological Institute

FD - 10 20



THIS DOCUMENT WAS PRODUCED WITH THE FOLLOWING SECURITY MEASURES: SPECIAL DOCUMENT PAPER, INK SCREENS, WATERMARK, BACKGROUND DESIGNS, HOLOGRAM AND OTHER SECURITY FEATURES NOT LISTED AND DO EXCEED DOCUMENT SECURITY INDUSTRY GUIDELINES

www.igi.org

January 13, 2026
GI Report No LG765639486
ROUND BRILLIANT

ROUND BRILLIANT
8.07 - 8.11 X 4.99 MM

8.07 - 8.11 X 4.99 MM

Carat Weight

2.02 CARATS

Color Grade

Clarity Grade	VS 2
VS 2	

Cut Grade	IDEAL
Depth	61.7%

Dep III	01.7%
Table	60%

Girdle

Culet	Pointed
-------	---------

Quiet	Pointed
Polish	EXCELLENT

	EXCELLENT	NONE
Symmetry		
Fluorescence		

Fluorescence	None
Inscription(s)	151 LG765639486

Page 1 of 1

Comments:
This Laboratory Grown Diamond was
created by Chemical Vapor Deposition

created by Chemical Vapor Deposition (CVD) growth process.

Type IIa