



ELECTRONIC COPY

LABORATORY GROWN DIAMOND REPORT

January 17, 2026
IGI Report Number LG766601835
Description LABORATORY GROWN DIAMOND
Shape and Cutting Style CUT CORNERED RECTANGULAR MODIFIED BRILLIANT
Measurements 10.35 X 7.17 X 4.72 MM

GRADING RESULTS

Carat Weight 3.01 CARATS
Color Grade F
Clarity Grade VS 1

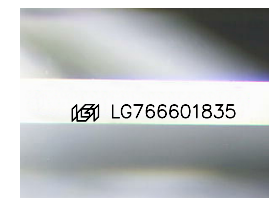
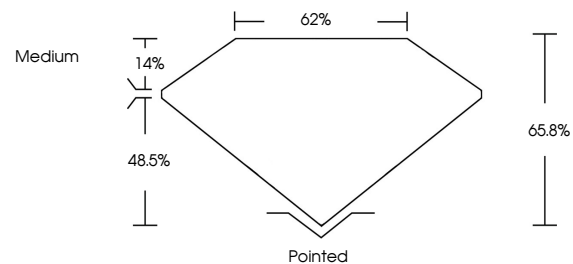
ADDITIONAL GRADING INFORMATION

Polish EXCELLENT
Symmetry EXCELLENT
Fluorescence NONE

Inscription(s) LG766601835

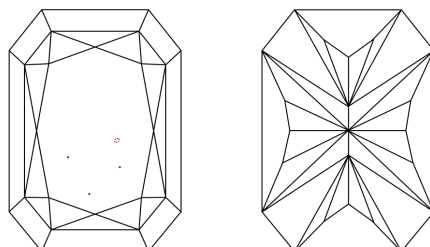
Comments: This Laboratory Grown Diamond was created by Chemical Vapor Deposition (CVD) growth process.
Type IIa

PROPORTIONS



Sample Image Used

CLARITY CHARACTERISTICS



KEY TO SYMBOLS

Red symbols indicate internal characteristics.
Green symbols indicate external characteristics.

COLOR

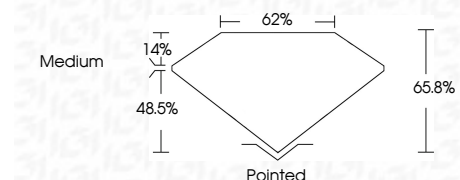
D E F G H I J Faint Very Light Light

CLARITY

FL IF VS¹⁻² VS¹⁻² SI¹⁻² I¹⁻³
Flawless Internally Flawless Very Very Slightly Included Very Slightly Included Slightly Included Included



January 17, 2026
IGI Report Number LG766601835
Description LABORATORY GROWN DIAMOND
Shape and Cutting Style CUT CORNERED RECTANGULAR MODIFIED BRILLIANT
Measurements 10.35 X 7.17 X 4.72 MM
GRADING RESULTS
Carat Weight 3.01 CARATS
Color Grade F
Clarity Grade VS 1



ADDITIONAL GRADING INFORMATION

Polish EXCELLENT
Symmetry EXCELLENT
Fluorescence NONE
Inscription(s) LG766601835
Comments: This Laboratory Grown Diamond was created by Chemical Vapor Deposition (CVD) growth process.
Type IIa



January 17, 2026
IGI Report No LG766601835
CUT CORNERED RECT. MODIFIED BRILLIANT
10.35 X 7.17 X 4.72 MM
3.01 CARATS
F
VS 1
48.5%
62%
Medium
Pointed
EXCELLENT
EXCELLENT
NONE
None
 LG766601835
Comments: This Laboratory Grown Diamond was created by Chemical Vapor Deposition (CVD) growth process.
Type IIa