



**ELECTRONIC COPY**

LG766619923  
Report verification at igi.org



February 9, 2026

IGI Report Number **LG766619923**

Description **LABORATORY GROWN DIAMOND**

Shape and Cutting Style **CUT CORNERED  
RECTANGULAR MODIFIED  
BRILLIANT**

Measurements **7.88 X 5.86 X 4.01 MM**

**GRADING RESULTS**

Carat Weight **1.54 CARAT**

Color Grade **E**

Clarity Grade **VVS 1**

February 9, 2026

IGI Report Number **LG766619923**

Description **LABORATORY GROWN DIAMOND**

Shape and Cutting Style **CUT CORNERED RECTANGULAR  
MODIFIED BRILLIANT**

Measurements **7.88 X 5.86 X 4.01 MM**

**GRADING RESULTS**

Carat Weight **1.54 CARAT**

Color Grade **E**

Clarity Grade **VVS 1**

**ADDITIONAL GRADING INFORMATION**

Polish **EXCELLENT**

Symmetry **EXCELLENT**

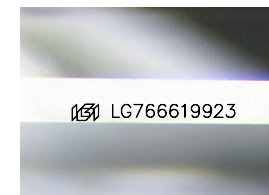
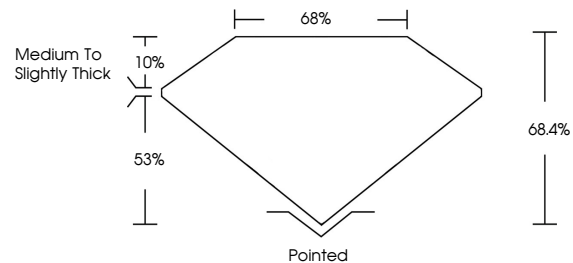
Fluorescence **NONE**

Inscription(s) **IGI LG766619923**

Comments: As Grown - No indication of post-growth treatment.

This Laboratory Grown Diamond was created by High Pressure High Temperature (HPHT) growth process. Type II

**PROPORTIONS**



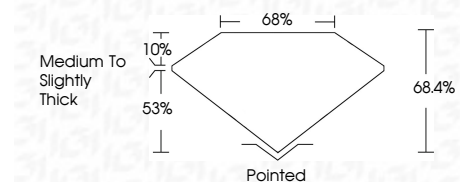
Sample Image Used

**COLOR**

D E F G H I J Faint Very Light Light

**CLARITY**

| FL       | IF                  | VVS <sup>1-2</sup>          | VS <sup>1-2</sup>      | SI <sup>1-2</sup> | I <sup>1-3</sup> |
|----------|---------------------|-----------------------------|------------------------|-------------------|------------------|
| Flawless | Internally Flawless | Very Very Slightly Included | Very Slightly Included | Slightly Included | Included         |



**ADDITIONAL GRADING INFORMATION**

Polish **EXCELLENT**

Symmetry **EXCELLENT**

Fluorescence **NONE**

Inscription(s) **IGI LG766619923**

Comments: As Grown - No indication of post-growth treatment.

This Laboratory Grown Diamond was created by High Pressure High Temperature (HPHT) growth process. Type II



**IGI**



|                  |                           |                                       |                       |              |             |               |       |        |                          |         |           |              |                |   |
|------------------|---------------------------|---------------------------------------|-----------------------|--------------|-------------|---------------|-------|--------|--------------------------|---------|-----------|--------------|----------------|---|
| February 9, 2026 | IGI Report No LG766619923 | CUT CORNERED RECT. MODIFIED BRILLIANT | 7.88 X 5.86 X 4.01 MM | 1.54 CARAT   | E           | VVS 1         | 68.4% | 68%    | Medium to Slightly Thick | Pointed | EXCELLENT | EXCELLENT    | NONE           | IGI LG766619923   |
| Polish           | Symmetry                  | Fluorescence                          | Inscription(s)        | Carat Weight | Color Grade | Clarity Grade | Table | Graile | Culet                    | Polish  | Symmetry  | Fluorescence | Inscription(s) | Comments: As Grown - No indication of post-growth treatment. This Laboratory Grown Diamond was created by High Pressure High Temperature (HPHT) growth process. Type II |