



**ELECTRONIC COPY**

LG766620934  
Report verification at igi.org



January 17, 2026

IGI Report Number **LG766620934**

Description **LABORATORY GROWN DIAMOND**

Shape and Cutting Style **EMERALD CUT**

Measurements **17.17 X 11.05 X 7.99 MM**

**GRADING RESULTS**

Carat Weight **15.15 CARATS**

Color Grade **F**

Clarity Grade **VS 2**

**LABORATORY GROWN DIAMOND REPORT**

January 17, 2026

IGI Report Number **LG766620934**

Description **LABORATORY GROWN DIAMOND**

Shape and Cutting Style **EMERALD CUT**

Measurements **17.17 X 11.05 X 7.99 MM**

**GRADING RESULTS**

Carat Weight **15.15 CARATS**

Color Grade **F**

Clarity Grade **VS 2**

**ADDITIONAL GRADING INFORMATION**

Polish **EXCELLENT**

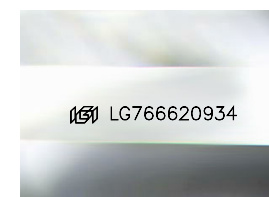
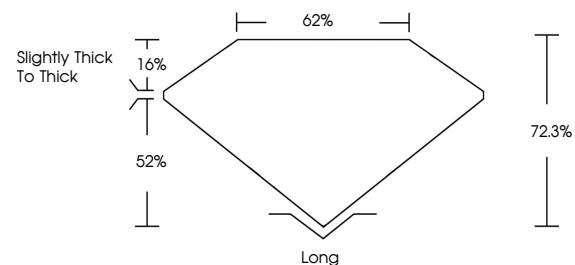
Symmetry **EXCELLENT**

Fluorescence **NONE**

Inscription(s) **IGI LG766620934**

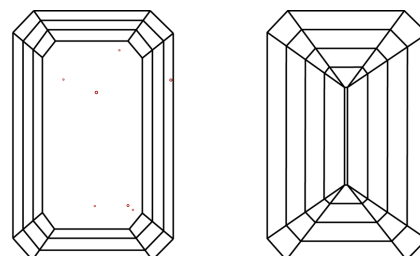
Comments: This Laboratory Grown Diamond was created by Chemical Vapor Deposition (CVD) growth process. Type IIa

**PROPORTIONS**



Sample Image Used

**CLARITY CHARACTERISTICS**



**KEY TO SYMBOLS**

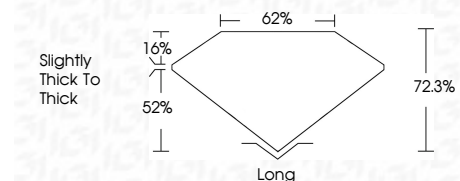
Red symbols indicate internal characteristics.  
Green symbols indicate external characteristics.

**COLOR**

D E F G H I J Faint Very Light Light

**CLARITY**

FL	IF	VS <sup>1-2</sup>	VS <sup>1-2</sup>	SI <sup>1-2</sup>	I <sup>1-3</sup>
Flawless	Internally Flawless	Very Very Slightly Included	Very Slightly Included	Slightly Included	Included



**ADDITIONAL GRADING INFORMATION**

Polish **EXCELLENT**

Symmetry **EXCELLENT**

Fluorescence **NONE**

Inscription(s) **IGI LG766620934**

Comments: This Laboratory Grown Diamond was created by Chemical Vapor Deposition (CVD) growth process. Type IIa



January 17, 2026	15.15 CARATS	F	VS 2	62%	72.3%	Long
IGI Report No LG766620934	17.17 X 11.05 X 7.99 MM	EMERALD CUT	EXCELLENT	EXCELLENT	NONE	IGI LG766620934
Carat Weight	Color Grade	Clarity Grade	Table	Graile	Culet	Polish
Symmetry	Fluorescence	Inscription(s)	Comments: This Laboratory Grown Diamond was created by Chemical Vapor Deposition (CVD) growth process. Type IIa			