



ELECTRONIC COPY

LG766622734
Report verification at igi.org



January 22, 2026

IGI Report Number **LG766622734**

Description **LABORATORY GROWN DIAMOND**

Shape and Cutting Style **EMERALD CUT**

Measurements **18.03 X 12.79 X 7.97 MM**

GRADING RESULTS

Carat Weight **20.06 CARATS**

Color Grade **FANCY INTENSE PINK**

Clarity Grade **VS 1**

January 22, 2026
IGI Report Number **LG766622734**
Description **LABORATORY GROWN DIAMOND**
Shape and Cutting Style **EMERALD CUT**
Measurements **18.03 X 12.79 X 7.97 MM**

GRADING RESULTS

Carat Weight **20.06 CARATS**

Color Grade **FANCY INTENSE PINK**

Clarity Grade **VS 1**

ADDITIONAL GRADING INFORMATION

Polish **EXCELLENT**

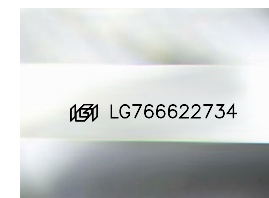
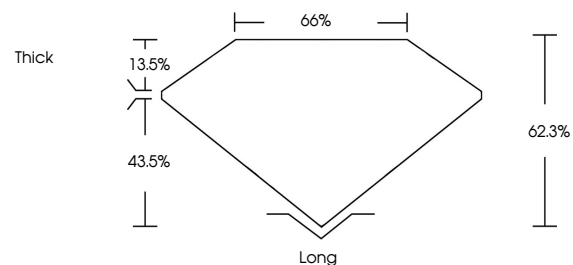
Symmetry **EXCELLENT**

Fluorescence **STRONG**

Inscription(s) **LG766622734**

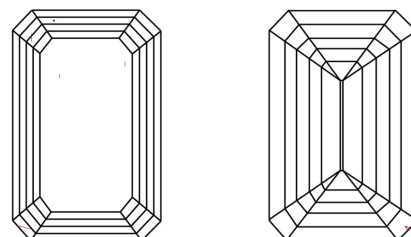
Comments: This Laboratory Grown Diamond was created by Chemical Vapor Deposition (CVD) growth process.
Indications of post-growth treatment.

PROPORTIONS



Sample Image Used

CLARITY CHARACTERISTICS



KEY TO SYMBOLS

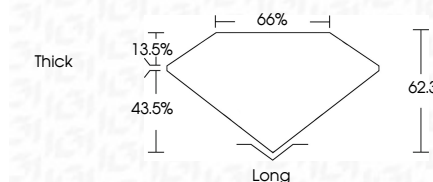
Red symbols indicate internal characteristics.
Green symbols indicate external characteristics.

COLOR

D E F G H I J Faint Very Light Light

CLARITY

FL	IF	VS ¹⁻²	VS ¹⁻²	SI ¹⁻²	I ¹⁻³
Flawless	Internally Flawless	Very Very Slightly Included	Very Slightly Included	Slightly Included	Included



ADDITIONAL GRADING INFORMATION

Polish **EXCELLENT**

Symmetry **EXCELLENT**

Fluorescence **STRONG**

Inscription(s) **LG766622734**

Comments: This Laboratory Grown Diamond was created by Chemical Vapor Deposition (CVD) growth process.
Indications of post-growth treatment.



IGI



January 22, 2026
IGI Report No **LG766622734**
EMERALD CUT
20.06 CARATS
Carat Weight
FANCY INTENSE PINK
Color Grade
VS 1
Clarity Grade
62.3%
Depth
65%
Table
Thick
Girdle
Long
Culet
EXCELLENT
Polish
EXCELLENT
Symmetry
STRONG
Fluorescence
STRONG
Inscription(s)
 LG766622734

Comments: This Laboratory Grown Diamond was created by Chemical Vapor Deposition (CVD) growth process.
Indications of post-growth treatment.