



**ELECTRONIC COPY**

LG766622735  
Report verification at igi.org



January 22, 2026

IGI Report Number **LG766622735**

Description **LABORATORY GROWN DIAMOND**

Shape and Cutting Style **EMERALD CUT**

Measurements **17.68 X 12.70 X 7.89 MM**

**GRADING RESULTS**

Carat Weight **20.07 CARATS**

Color Grade **FANCY INTENSE PINK**

Clarity Grade **VS 1**

January 22, 2026  
IGI Report Number **LG766622735**  
Description **LABORATORY GROWN DIAMOND**  
Shape and Cutting Style **EMERALD CUT**  
Measurements **17.68 X 12.70 X 7.89 MM**

**GRADING RESULTS**

Carat Weight **20.07 CARATS**

Color Grade **FANCY INTENSE PINK**

Clarity Grade **VS 1**

**ADDITIONAL GRADING INFORMATION**

Polish **EXCELLENT**

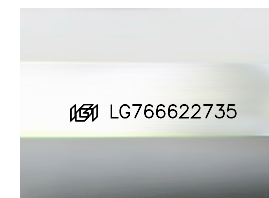
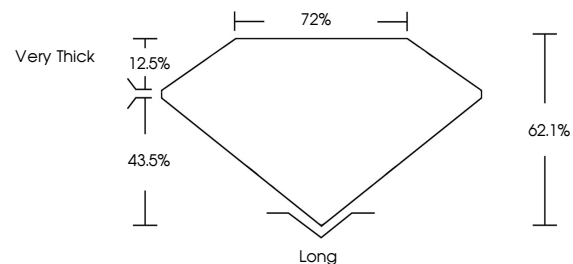
Symmetry **EXCELLENT**

Fluorescence **STRONG**

Inscription(s) **LG766622735**

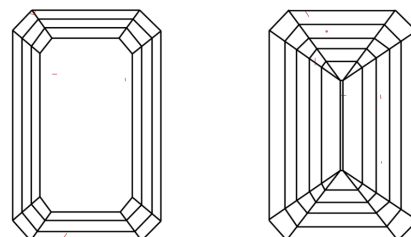
Comments: This Laboratory Grown Diamond was created by Chemical Vapor Deposition (CVD) growth process.  
Indications of post-growth treatment.

**PROPORTIONS**



Sample Image Used

**CLARITY CHARACTERISTICS**



**KEY TO SYMBOLS**

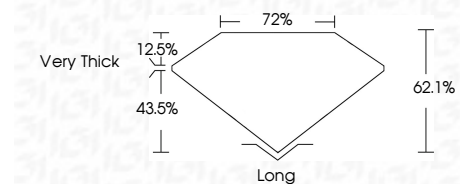
Red symbols indicate internal characteristics.  
Green symbols indicate external characteristics.

**COLOR**

D E F G H I J Faint Very Light Light

**CLARITY**

FL	IF	VS <sup>1-2</sup>	VS <sup>1-2</sup>	SI <sup>1-2</sup>	I <sup>1-3</sup>
Flawless	Internally Flawless	Very Very Slightly Included	Very Slightly Included	Slightly Included	Included



**ADDITIONAL GRADING INFORMATION**

Polish **EXCELLENT**

Symmetry **EXCELLENT**

Fluorescence **STRONG**

Inscription(s) **LG766622735**

Comments: This Laboratory Grown Diamond was created by Chemical Vapor Deposition (CVD) growth process.  
Indications of post-growth treatment.



**IGI**



January 22, 2026  
IGI Report No **LG766622735**  
**EMERALD CUT**  
**20.07 CARATS**  
Carat Weight  
Color Grade **FANCY INTENSE PINK**  
Clarity Grade **VS 1**  
Depth **62.1%**  
Table **72%**  
Girdle **Very Thick**  
Culet **Long**  
Polish **EXCELLENT**  
Symmetry **EXCELLENT**  
Fluorescence **STRONG**  
Inscription(s) **LG766622735**  
Comments: This Laboratory Grown Diamond was created by Chemical Vapor Deposition (CVD) growth process.  
Indications of post-growth treatment.