



ELECTRONIC COPY

LG766639917
Report verification at igi.org



January 19, 2026

IGI Report Number **LG766639917**

Description **LABORATORY GROWN DIAMOND**

Shape and Cutting Style **ROUND BRILLIANT**

Measurements **7.98 - 8.01 X 4.91 MM**

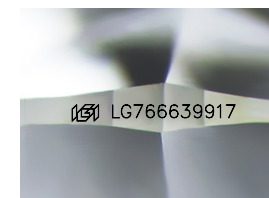
GRADING RESULTS

Carat Weight **1.96 CARAT**

Color Grade **E**

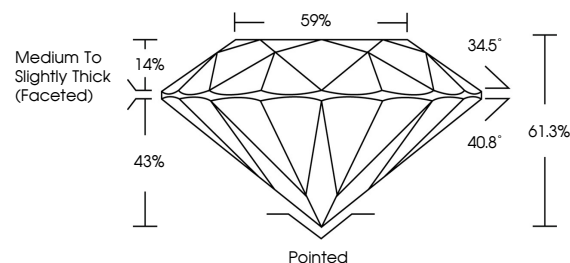
Clarity Grade **VS 1**

Cut Grade **EXCELLENT**

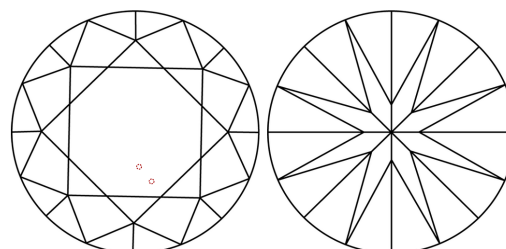


Sample Image Used

PROPORTIONS



CLARITY CHARACTERISTICS



KEY TO SYMBOLS

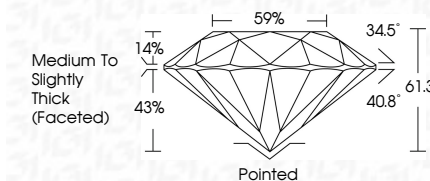
Red symbols indicate internal characteristics.
Green symbols indicate external characteristics.

COLOR

D E F G H I J Faint Very Light Light

CLARITY

FL	IF	VS ¹⁻²	VS ¹⁻²	SI ¹⁻²	I ¹⁻³
Flawless	Internally Flawless	Very Very Slightly Included	Very Slightly Included	Slightly Included	Included



ADDITIONAL GRADING INFORMATION

Polish **EXCELLENT**

Symmetry **EXCELLENT**

Fluorescence **NONE**

Inscription(s) **IGI LG766639917**

Comments: This Laboratory Grown Diamond was created by Chemical Vapor Deposition (CVD) growth process. Type IIa



January 19, 2026
IGI Report No LG766639917
ROUND BRILLIANT

7.98 - 8.01 X 4.91 MM

1.96 CARAT
E

Color Grade
EXCELLENT

Clarity Grade
VS 1

Depth
61.3%

Table
59%

Girdle
Medium To Slightly Thick (Faceted)

Culet
Pointed

Polish
EXCELLENT

Symmetry
EXCELLENT

Fluorescence
NONE

Inscription(s)
IGI LG766639917

Comments: This Laboratory Grown Diamond was created by Chemical Vapor Deposition (CVD) growth process. Type IIa