



**ELECTRONIC COPY**

LG766654214  
Report verification at igi.org



January 28, 2026

IGI Report Number **LG766654214**

Description **LABORATORY GROWN DIAMOND**

Shape and Cutting Style **EMERALD CUT**

Measurements **7.19 X 5.07 X 3.67 MM**

**GRADING RESULTS**

Carat Weight **1.38 CARAT**

Color Grade **FANCY VIVID PINK**

Clarity Grade **VS 1**

**LABORATORY GROWN DIAMOND REPORT**

January 28, 2026

IGI Report Number **LG766654214**

Description **LABORATORY GROWN DIAMOND**

Shape and Cutting Style **EMERALD CUT**

Measurements **7.19 X 5.07 X 3.67 MM**

**GRADING RESULTS**

Carat Weight **1.38 CARAT**

Color Grade **FANCY VIVID PINK**

Clarity Grade **VS 1**

**ADDITIONAL GRADING INFORMATION**

Polish **VERY GOOD**

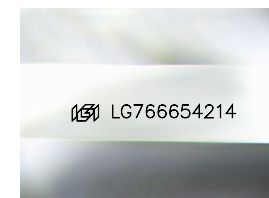
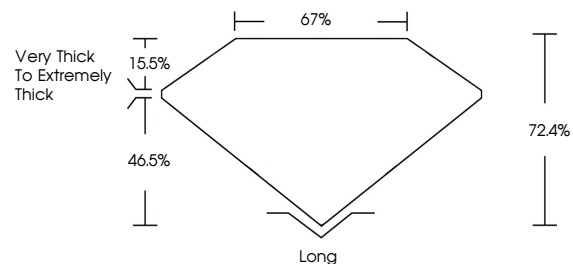
Symmetry **VERY GOOD**

Fluorescence **SLIGHT**

Inscription(s) **LG766654214**

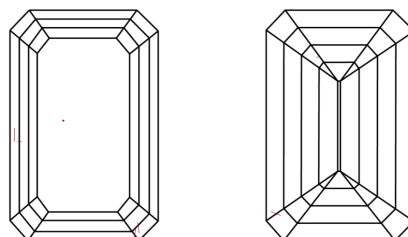
Comments: This Laboratory Grown Diamond was created by Chemical Vapor Deposition (CVD) growth process. Indications of post-growth treatment.

**PROPORTIONS**



Sample Image Used

**CLARITY CHARACTERISTICS**



**KEY TO SYMBOLS**

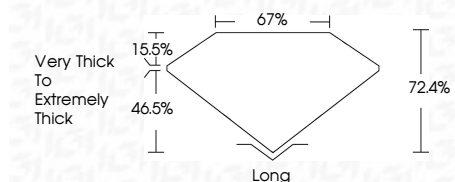
Red symbols indicate internal characteristics.  
Green symbols indicate external characteristics.

**COLOR**

D E F G H I J Faint Very Light Light

**CLARITY**

FL	IF	VS <sup>1-2</sup>	VS <sup>1-2</sup>	SI <sup>1-2</sup>	I <sup>1-3</sup>
Flawless	Internally Flawless	Very Very Slightly Included	Very Slightly Included	Slightly Included	Included



**ADDITIONAL GRADING INFORMATION**

Polish **VERY GOOD**

Symmetry **VERY GOOD**

Fluorescence **SLIGHT**

Inscription(s) **LG766654214**

Comments: This Laboratory Grown Diamond was created by Chemical Vapor Deposition (CVD) growth process. Indications of post-growth treatment.



**IGI**



January 28, 2026  
IGI Report No **LG766654214**  
**EMERALD CUT**  
**1.38 CARAT**  
Carat Weight **FANCY VIVID PINK**  
Color Grade **VS 1**  
Depth **72.4%**  
Table **67%**  
Girdle **Very Thick to Extremely Thick**  
Culet **Long**  
Polish **VERY GOOD**  
Symmetry **VERY GOOD**  
Fluorescence **SLIGHT**  
Inscription(s) **LG766654214**  
Comments: This Laboratory Grown Diamond was created by Chemical Vapor Deposition (CVD) growth process. Indications of post-growth treatment.