



**INTERNATIONAL  
GEMOLOGICAL  
INSTITUTE**

**ELECTRONIC COPY**



January 26, 2026

**IGI Report Number LG766655291**  
**CUT CORNERED RECTANGULAR  
MODIFIED BRILLIANT**  
**LABORATORY GROWN DIAMOND**  
**5.51 X 3.52 X 2.42 MM**

**Carat Weight 0.39 CARAT**  
**Color Grade FANCY VIVID GREEN**  
**Clarity Grade VVS 2**  
**Polish VERY GOOD**  
**Symmetry VERY GOOD**  
**Fluorescence NONE**  
**Inscription(s) IGI LG766655291**

Comments: This Laboratory Grown Diamond was created by Chemical Vapor Deposition (CVD) growth process. Indications of post-growth treatment.

**LABORATORY GROWN DIAMOND REPORT**

January 26, 2026

IGI Report Number

**LG766655291**

Description

**LABORATORY GROWN DIAMOND**

Shape and Cutting Style

**CUT CORNERED RECTANGULAR MODIFIED  
BRILLIANT**

Measurements

**5.51 X 3.52 X 2.42 MM**

**GRADING RESULTS**

Carat Weight

**0.39 CARAT**

Color Grade

**FANCY VIVID GREEN**

Clarity Grade

**VVS 2**

**ADDITIONAL GRADING INFORMATION**

Polish

**VERY GOOD**

Symmetry

**VERY GOOD**

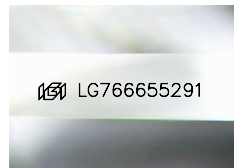
Fluorescence

**NONE**

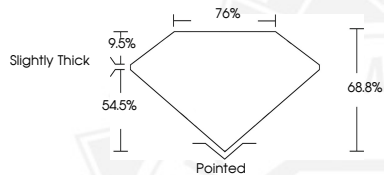
Inscription(s)

**IGI LG766655291**

Comments: This Laboratory Grown Diamond was created by Chemical Vapor Deposition (CVD) growth process. Indications of post-growth treatment.



Sample Image Used



January 26, 2026

**IGI Report Number LG766655291**  
**CUT CORNERED RECTANGULAR  
MODIFIED BRILLIANT**  
**LABORATORY GROWN DIAMOND**  
**5.51 X 3.52 X 2.42 MM**

**Carat Weight 0.39 CARAT**  
**Color Grade FANCY VIVID GREEN**  
**Clarity Grade VVS 2**  
**Polish VERY GOOD**  
**Symmetry VERY GOOD**  
**Fluorescence NONE**  
**Inscription(s) IGI LG766655291**

Comments: This Laboratory Grown Diamond was created by Chemical Vapor Deposition (CVD) growth process. Indications of post-growth treatment.



THIS DOCUMENT WAS PRODUCED WITH THE FOLLOWING SECURITY MEASURES: SPECIAL DOCUMENT PAPER, INK SCREENS, WATERMARK, BACKGROUND DESIGNS, HOLOGRAM AND OTHER SECURITY FEATURES NOT LISTED AND DO EXCEED DOCUMENT SECURITY INDUSTRY GUIDELINES.

For terms & conditions and to verify this report, please visit [www.igi.org](http://www.igi.org)