



**ELECTRONIC COPY**

LG766655572  
Report verification at igi.org



February 5, 2026  
IGI Report Number **LG766655572**  
Description **LABORATORY GROWN DIAMOND**  
Shape and Cutting Style **CUSHION MODIFIED BRILLIANT**  
Measurements **9.64 X 7.13 X 4.62 MM**  
**GRADING RESULTS**  
Carat Weight **3.03 CARATS**  
Color Grade **FANCY INTENSE YELLOW**  
Clarity Grade **SI 1**

February 5, 2026  
IGI Report Number **LG766655572**  
Description **LABORATORY GROWN DIAMOND**  
Shape and Cutting Style **CUSHION MODIFIED BRILLIANT**  
Measurements **9.64 X 7.13 X 4.62 MM**

**GRADING RESULTS**

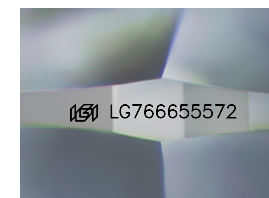
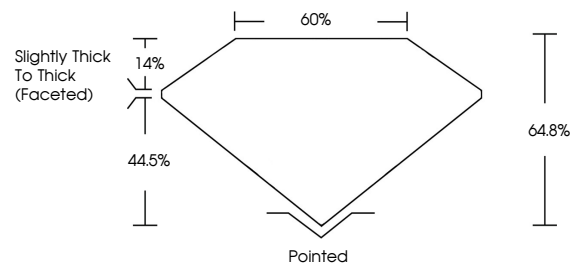
Carat Weight **3.03 CARATS**  
Color Grade **FANCY INTENSE YELLOW**  
Clarity Grade **SI 1**

**ADDITIONAL GRADING INFORMATION**

Polish **EXCELLENT**  
Symmetry **EXCELLENT**  
Fluorescence **NONE**  
Inscription(s) **IGI LG766655572**

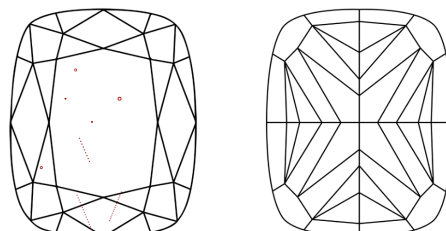
Comments: This Laboratory Grown Diamond was created by Chemical Vapor Deposition (CVD) growth process.

**PROPORTIONS**



Sample Image Used

**CLARITY CHARACTERISTICS**



**KEY TO SYMBOLS**

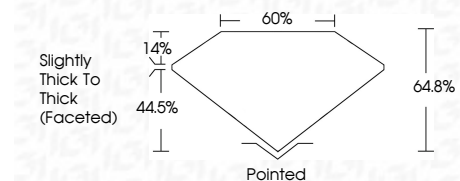
Red symbols indicate internal characteristics.  
Green symbols indicate external characteristics.

**COLOR**

D E F G H I J Faint Very Light Light

**CLARITY**

FL	IF	VS <sup>1-2</sup>	VS <sup>1-2</sup>	SI <sup>1-2</sup>	I <sup>1-3</sup>
Flawless	Internally Flawless	Very Very Slightly Included	Very Slightly Included	Slightly Included	Included



**ADDITIONAL GRADING INFORMATION**

Polish **EXCELLENT**  
Symmetry **EXCELLENT**  
Fluorescence **NONE**  
Inscription(s) **IGI LG766655572**  
Comments: This Laboratory Grown Diamond was created by Chemical Vapor Deposition (CVD) growth process.



February 5, 2026  
IGI Report No LG766655572  
**CUSHION MODIFIED BRILLIANT**  
9.64 X 7.13 X 4.62 MM  
3.03 CARATS  
FANCY INTENSE YELLOW  
SI 1  
64.0%  
0.0%  
Slightly Thick To Thick (Faceted)  
Pointed  
EXCELLENT  
EXCELLENT  
NONE  
IGI LG766655572  
Comments: This Laboratory Grown Diamond was created by Chemical Vapor Deposition (CVD) growth process.