

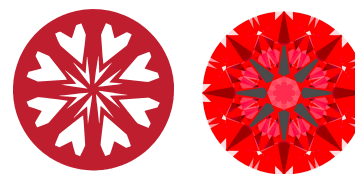


**INTERNATIONAL
GEMOLOGICAL
INSTITUTE**

LG766671475
Report verification at igi.org

LIGHT PERFORMANCE REPORT

Light Performance Grade: Exceptional



Structured Light Environment Representation



January 19, 2026
IGI Report Number **LG766671475**
Description **LABORATORY GROWN DIAMOND**
Shape and Cutting Style **ROUND BRILLIANT**
Measurements **7.45 - 7.48 X 4.52 MM**
GRADING RESULTS
Carat Weight **1.53 CARAT**
Color Grade **E**
Clarity Grade **VVS 2**
Cut Grade **IDEAL**

**ELECTRONIC COPY
LABORATORY GROWN DIAMOND REPORT**

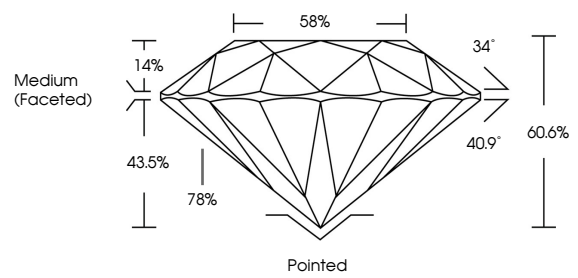
January 19, 2026
IGI Report Number **LG766671475**
Description **LABORATORY GROWN DIAMOND**
Shape and Cutting Style **ROUND BRILLIANT**
Measurements **7.45 - 7.48 x 4.52 mm**

GRADING RESULTS
Carat Weight **1.53 CARAT**
Color Grade **E**
Clarity Grade **VVS 2**
Cut Grade **IDEAL**

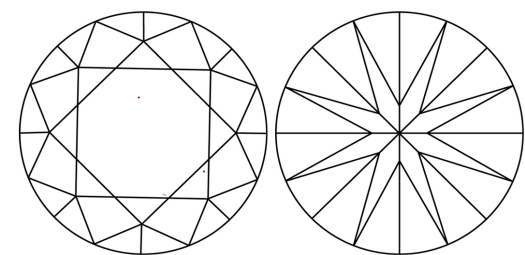
ADDITIONAL GRADING INFORMATION
Polish **EXCELLENT**
Symmetry **EXCELLENT**
Fluorescence **NONE**
Inscription(s) **IGI LG766671475**

Comments: HEARTS & ARROWS
This Laboratory Grown Diamond was created by Chemical Vapor Deposition (CVD) growth process. Type IIa

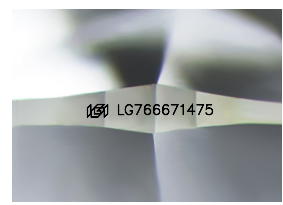
PROPORTIONS



CLARITY CHARACTERISTICS



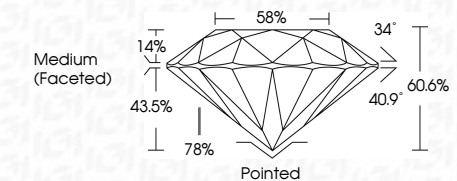
KEY TO SYMBOLS
Red symbols indicate internal characteristics.
Green symbols indicate external characteristics.



Sample Image Used

www.igi.org

© IGI 2020, International Gemological Institute FD - 10 20



ADDITIONAL GRADING INFORMATION
Polish **EXCELLENT**
Symmetry **EXCELLENT**
Fluorescence **NONE**
Inscription(s) **IGI LG766671475**
Comments: HEARTS & ARROWS
This Laboratory Grown Diamond was created by Chemical Vapor Deposition (CVD) growth process. Type IIa



January 19, 2026	IGI Report No LG766671475	1.53 CARAT	E	Pointed
ROUND BRILLIANT	7.45 - 7.48 X 4.52 MM	IDEAL	VVS 2	EXCELLENT
Color Grade	Cut Grade	Depth	Table	Grade
E	IDEAL	60.6%	58%	Medium (Faceted)
Clarity Grade	Polish	Symmetry	Fluorescence	Inscription(s)
VVS 2	EXCELLENT	EXCELLENT	NONE	IGI LG766671475
Comments: HEARTS & ARROWS This Laboratory Grown Diamond was created by Chemical Vapor Deposition (CVD) growth process. Type IIa				