

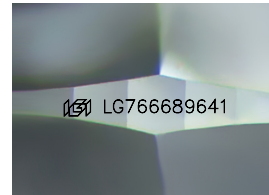
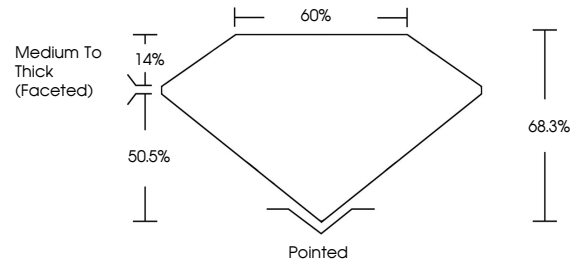


**INTERNATIONAL  
GEMOLOGICAL  
INSTITUTE**

**ELECTRONIC COPY**

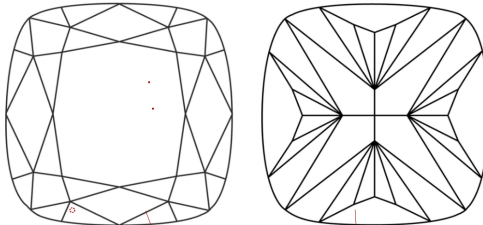
LG766689641  
Report verification at [igi.org](https://www.igi.org)

## PROPORTIONS



Sample Image Used

## CLARITY CHARACTERISTICS



## KEY TO SYMBOLS

Red symbols indicate internal characteristics.  
Green symbols indicate external characteristics.

## COLOR

D E F G H I J Faint Very Light Light

## CLARITY

FL	IF	VS <sup>1-2</sup>	VS <sup>1-2</sup>	SI <sup>1-2</sup>	I <sup>1-3</sup>
----	----	-------------------	-------------------	-------------------	------------------

Flawless	Internally Flawless	Very Very Slightly Included	Very Slightly Included	Slightly Included	Included
----------	---------------------	-----------------------------	------------------------	-------------------	----------



January 21, 2026

IGI Report Number **LG766689641**

Description	LABORATORY GROWN DIAMOND
-------------	--------------------------

Shape and Cutting Style **SQUARE CUSHION MODIFIED  
BRILLIANT**

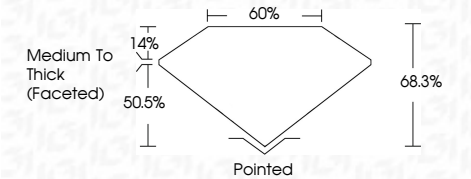
Measurements **8.04 X 7.88 X 5.38 MM**

## GRADING RESULTS

Carat Weight **2.59 CARATS**

Color Grade **G**

Clarity Grade **VS 2**



### ADDITIONAL GRADING INFORMATION

Polish **EXCELLENT**Symmetry **EXCELLENT**Fluorescence **NONE**Inscription(s)  LG766689641

Comments: This Laboratory Grown Diamond was created by Chemical Vapor Deposition (CVD) growth process.  
Type IIa



IGI



© IGI 2020, International Gemological Institute

FD - 10 20

**www.igi.org**

THIS DOCUMENT WAS PRODUCED WITH THE FOLLOWING SECURITY MEASURES: SPECIAL DOCUMENT PAPER, INK SCREENS, WATERMARK, BACKGROUND DESIGNS, HOLOGRAM AND OTHER SECURITY FEATURES NOT LISTED AND DO EXCEED DOCUMENT SECURITY INDUSTRY GUIDELINES

January 21, 2026	G1 Report No LG76699041	
SQUARE CLUSHION MODIFIED BRILLIANT		
0.04 X 7.88 X 6.38 MM	2.69 CARATS	G
Color Grade	Clarity Grade	VS 2
Carat Weight	Depth	68.3%
	Table	50%
	Girdle	Medium to Thick (Faceted)
Culet	Polish	Polished
Symmetry	Fluorescence	EXCELLENT
Inscription(s)		EXCELLENT
		NONE
		1691 LG76699041
Comments: This Laboratory Grown Diamond was created by Chemical Vapor Deposition (CVD) growth process. Type IIa		