



ELECTRONIC COPY

LG766690187
Report verification at igi.org



January 19, 2026

IGI Report Number **LG766690187**

Description **LABORATORY GROWN DIAMOND**

Shape and Cutting Style **CUT CORNERED
RECTANGULAR MODIFIED
BRILLIANT**

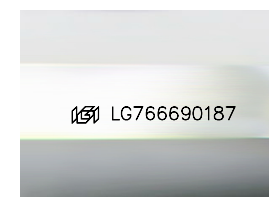
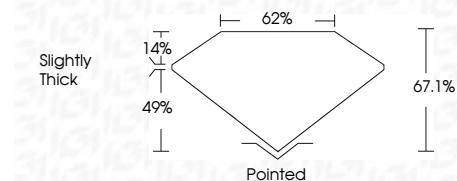
Measurements **10.09 X 7.06 X 4.74 MM**

GRADING RESULTS

Carat Weight **2.99 CARATS**

Color Grade **F**

Clarity Grade **VS 1**



Sample Image Used

ADDITIONAL GRADING INFORMATION

Polish **EXCELLENT**

Symmetry **EXCELLENT**

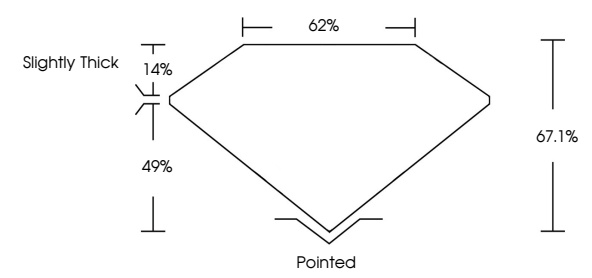
Fluorescence **NONE**

Inscription(s) **IGI LG766690187**

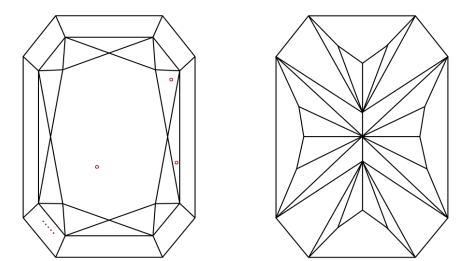
Comments: This Laboratory Grown Diamond was created by Chemical Vapor Deposition (CVD) growth process. Type IIa



PROPORTIONS



CLARITY CHARACTERISTICS



KEY TO SYMBOLS

Red symbols indicate internal characteristics.
Green symbols indicate external characteristics.

COLOR

D E F G H I J Faint Very Light Light

CLARITY

FL	IF	VS ¹⁻²	VS ¹⁻²	SI ¹⁻²	I ¹⁻³
Flawless	Internally Flawless	Very Very Slightly Included	Very Slightly Included	Slightly Included	Included



January 19, 2026
IGI Report No LG766690187
CUT CORNERED RECT. MODIFIED BRILLIANT
10.09 X 7.06 X 4.74 MM
2.99 CARATS
F
Color Grade
VS 1
Clarity Grade
67.1%
62%
Slightly Thick
Pointed
EXCELLENT
EXCELLENT
NONE
IGI LG766690187
Comments: This Laboratory Grown Diamond was created by Chemical Vapor Deposition (CVD) growth process. Type IIa