



**ELECTRONIC COPY**

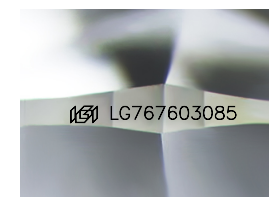
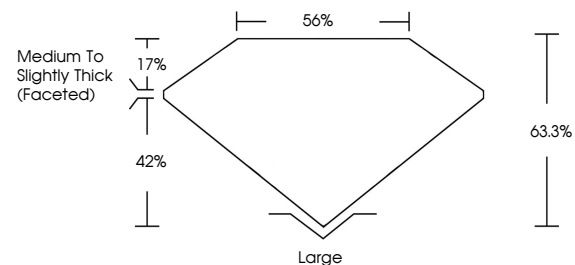
LG767603085  
Report verification at igi.org



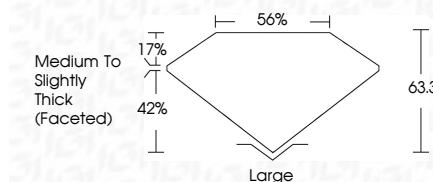
January 20, 2026  
IGI Report Number **LG767603085**  
Description **LABORATORY GROWN DIAMOND**  
Shape and Cutting Style **CUSHION MODIFIED BRILLIANT**  
Measurements **11.72 X 8.75 X 5.54 MM**  
**GRADING RESULTS**  
Carat Weight **4.30 CARATS**  
Color Grade **E**  
Clarity Grade **VVS 2**

January 20, 2026  
IGI Report Number **LG767603085**  
Description **LABORATORY GROWN DIAMOND**  
Shape and Cutting Style **CUSHION MODIFIED BRILLIANT**  
Measurements **11.72 X 8.75 X 5.54 MM**  
**GRADING RESULTS**  
Carat Weight **4.30 CARATS**  
Color Grade **E**  
Clarity Grade **VVS 2**

**PROPORTIONS**



Sample Image Used



**ADDITIONAL GRADING INFORMATION**  
Polish **EXCELLENT**  
Symmetry **EXCELLENT**  
Fluorescence **NONE**  
Inscription(s) **IGI LG767603085**

Comments: This Laboratory Grown Diamond was created by Chemical Vapor Deposition (CVD) growth process. Type IIa

**COLOR**

D E F G H I J Faint Very Light Light

**CLARITY**

| FL       | IF                  | VVS <sup>1-2</sup>          | VS <sup>1-2</sup>      | SI <sup>1-2</sup> | I <sup>1-3</sup> |
|----------|---------------------|-----------------------------|------------------------|-------------------|------------------|
| Flawless | Internally Flawless | Very Very Slightly Included | Very Slightly Included | Slightly Included | Included         |

**ADDITIONAL GRADING INFORMATION**

Polish **EXCELLENT**  
Symmetry **EXCELLENT**  
Fluorescence **NONE**  
Inscription(s) **IGI LG767603085**  
Comments: This Laboratory Grown Diamond was created by Chemical Vapor Deposition (CVD) growth process. Type IIa



January 20, 2026  
IGI Report No **LG767603085**  
**CUSHION MODIFIED BRILLIANT**  
**11.72 X 8.75 X 5.54 MM**  
Carat Weight **4.30 CARATS**  
Color Grade **E**  
Clarity Grade **VVS 2**  
Depth **63.3%**  
Table **56%**  
Girdle **Medium to Slightly Thick (Faceted)**  
Culet **Large**  
Polish **EXCELLENT**  
Symmetry **EXCELLENT**  
Fluorescence **NONE**  
Inscription(s) **IGI LG767603085**

Comments: This Laboratory Grown Diamond was created by Chemical Vapor Deposition (CVD) growth process. Type IIa