



ELECTRONIC COPY

LG767606628
Report verification at igi.org



January 22, 2026

IGI Report Number **LG767606628**

Description **LABORATORY GROWN DIAMOND**

Shape and Cutting Style **ROUND BRILLIANT**

Measurements **6.60 - 6.62 X 4.07 MM**

GRADING RESULTS

Carat Weight **1.09 CARAT**

Color Grade **D**

Clarity Grade **VVS 2**

Cut Grade **IDEAL**

January 22, 2026

IGI Report Number **LG767606628**

Description **LABORATORY GROWN DIAMOND**

Shape and Cutting Style **ROUND BRILLIANT**

Measurements **6.60 - 6.62 X 4.07 MM**

GRADING RESULTS

Carat Weight **1.09 CARAT**

Color Grade **D**

Clarity Grade **VVS 2**

Cut Grade **IDEAL**

ADDITIONAL GRADING INFORMATION

Polish **EXCELLENT**

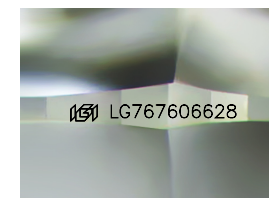
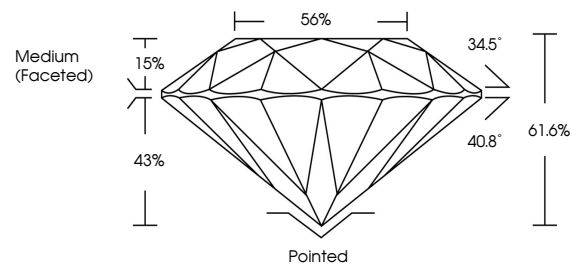
Symmetry **EXCELLENT**

Fluorescence **NONE**

Inscription(s) **IGI LG767606628**

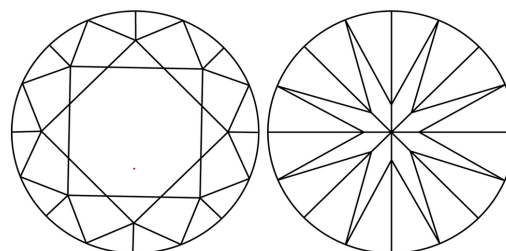
Comments: This Laboratory Grown Diamond was created by Chemical Vapor Deposition (CVD) growth process.
Type IIa

PROPORTIONS



Sample Image Used

CLARITY CHARACTERISTICS



KEY TO SYMBOLS

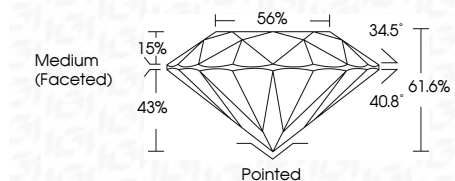
Red symbols indicate internal characteristics.
Green symbols indicate external characteristics.

COLOR

D E F G H I J Faint Very Light Light

CLARITY

| FL | IF | VVS ¹⁻² | VS ¹⁻² | SI ¹⁻² | I ¹⁻³ |
|----------|---------------------|-----------------------------|------------------------|-------------------|------------------|
| Flawless | Internally Flawless | Very Very Slightly Included | Very Slightly Included | Slightly Included | Included |



ADDITIONAL GRADING INFORMATION

Polish **EXCELLENT**

Symmetry **EXCELLENT**

Fluorescence **NONE**

Inscription(s) **IGI LG767606628**

Comments: This Laboratory Grown Diamond was created by Chemical Vapor Deposition (CVD) growth process.
Type IIa



IGI



| | | | | | | | | | | | | |
|---------------------------|-----------------------|-------------|---------------|-----------|-------|-------|------------------|---------|-----------|-----------|--------------|-----------------|
| January 22, 2026 | 1.09 CARAT | D | VVS 2 | IDEAL | 61.6% | 56% | Medium (Faceted) | Pointed | EXCELLENT | EXCELLENT | NONE | IGI LG767606628 |
| IGI Report No LG767606628 | 6.60 - 6.62 X 4.07 MM | Color Grade | Clarity Grade | Cut Grade | Depth | Table | Girdle | Culet | Polish | Symmetry | Fluorescence | Inscription(s) |
| ROUND BRILLIANT | | | | | | | | | | | | |

Comments: This Laboratory Grown Diamond was created by Chemical Vapor Deposition (CVD) growth process.
Type IIa