



**ELECTRONIC COPY**

**LABORATORY GROWN DIAMOND REPORT**

January 26, 2026  
IGI Report Number **LG767608945**

Description **LABORATORY GROWN DIAMOND**

Shape and Cutting Style **CUT CORNERED RECTANGULAR  
MODIFIED BRILLIANT**

Measurements **11.18 X 7.95 X 5.47 MM**

**GRADING RESULTS**

Carat Weight **4.52 CARATS**

Color Grade **FANCY INTENSE YELLOW**

Clarity Grade **VS 1**

**ADDITIONAL GRADING INFORMATION**

Polish **EXCELLENT**

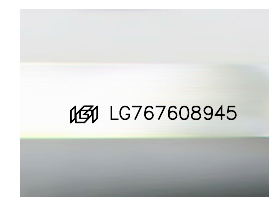
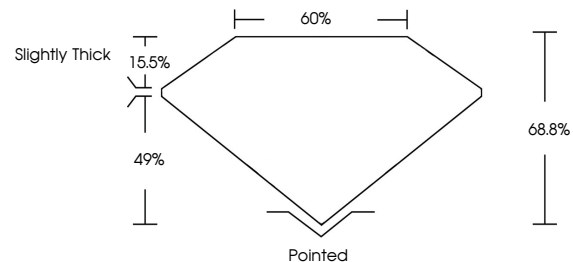
Symmetry **EXCELLENT**

Fluorescence **NONE**

Inscription(s) **IGI LG767608945**

Comments: This Laboratory Grown Diamond was created by Chemical Vapor Deposition (CVD) growth process.

**PROPORTIONS**



Sample Image Used

**COLOR**

D E F G H I J Faint Very Light Light

**CLARITY**

FL	IF	VS <sup>1-2</sup>	VS <sup>1-2</sup>	SI <sup>1-2</sup>	I <sup>1-3</sup>
Flawless	Internally Flawless	Very Very Slightly Included	Very Slightly Included	Slightly Included	Included



January 26, 2026

IGI Report Number **LG767608945**

Description **LABORATORY GROWN DIAMOND**

Shape and Cutting Style **CUT CORNERED  
RECTANGULAR MODIFIED  
BRILLIANT**

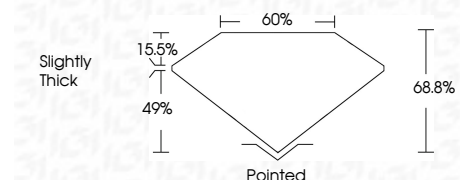
Measurements **11.18 X 7.95 X 5.47 MM**

**GRADING RESULTS**

Carat Weight **4.52 CARATS**

Color Grade **FANCY INTENSE YELLOW**

Clarity Grade **VS 1**



**ADDITIONAL GRADING INFORMATION**

Polish **EXCELLENT**

Symmetry **EXCELLENT**

Fluorescence **NONE**

Inscription(s) **IGI LG767608945**

Comments: This Laboratory Grown Diamond was created by Chemical Vapor Deposition (CVD) growth process.



**IGI**



January 26, 2026  
IGI Report No LG767608945  
CUT CORNERED RECT. MODIFIED BRILLIANT  
11.18 X 7.95 X 5.47 MM  
4.52 CARATS  
FANCY INTENSE YELLOW  
VS 1  
68.8%  
49%  
Slightly Thick  
Pointed  
EXCELLENT  
EXCELLENT  
NONE  
IGI LG767608945  
Comments: This Laboratory Grown Diamond was created by Chemical Vapor Deposition (CVD) growth process.