



ELECTRONIC COPY

LG768613059
Report verification at igi.org



January 21, 2026

IGI Report Number **LG768613059**

Description **LABORATORY GROWN DIAMOND**

Shape and Cutting Style **PRINCESS CUT**

Measurements **11.76 X 11.65 X 8.29 MM**

GRADING RESULTS

Carat Weight **10.05 CARATS**

Color Grade **E**

Clarity Grade **VS 1**

January 21, 2026
IGI Report Number **LG768613059**
Description **LABORATORY GROWN DIAMOND**
Shape and Cutting Style **PRINCESS CUT**
Measurements **11.76 X 11.65 X 8.29 MM**

GRADING RESULTS

Carat Weight **10.05 CARATS**

Color Grade **E**

Clarity Grade **VS 1**

ADDITIONAL GRADING INFORMATION

Polish **EXCELLENT**

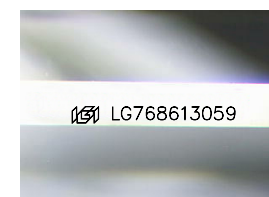
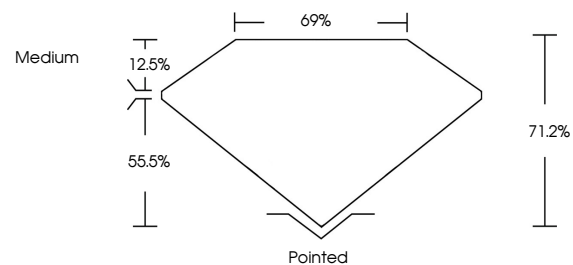
Symmetry **EXCELLENT**

Fluorescence **NONE**

Inscription(s) **IGI LG768613059**

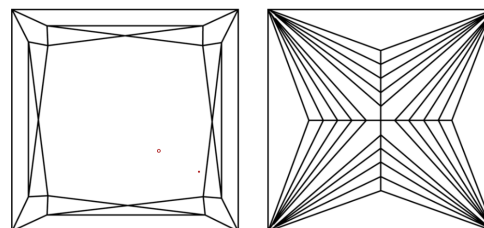
Comments: This Laboratory Grown Diamond was created by Chemical Vapor Deposition (CVD) growth process. Type IIa

PROPORTIONS



Sample Image Used

CLARITY CHARACTERISTICS



KEY TO SYMBOLS

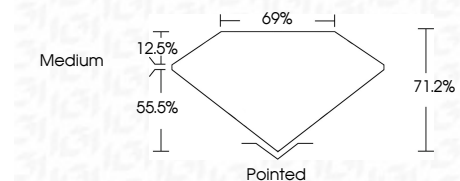
Red symbols indicate internal characteristics.
Green symbols indicate external characteristics.

COLOR

D E F G H I J Faint Very Light Light

CLARITY

FL	IF	VS ¹⁻²	VS ¹⁻²	SI ¹⁻²	I ¹⁻³
Flawless	Internally Flawless	Very Very Slightly Included	Very Slightly Included	Slightly Included	Included



ADDITIONAL GRADING INFORMATION

Polish **EXCELLENT**

Symmetry **EXCELLENT**

Fluorescence **NONE**

Inscription(s) **IGI LG768613059**

Comments: This Laboratory Grown Diamond was created by Chemical Vapor Deposition (CVD) growth process. Type IIa



IGI



January 21, 2026
IGI Report No LG768613059
PRINCESS CUT

10.05 CARATS
E

11.76 X 11.65 X 8.29 MM
Carat Weight

E
Color Grade

VS 1
Clarity Grade

71.2%
Depth

69%
Table

Medium
Girdle

Pointed
Culet

EXCELLENT
Polish

EXCELLENT
Symmetry

NONE
Fluorescence

IGI LG768613059
Inscription(s)

Comments: This Laboratory Grown Diamond was created by Chemical Vapor Deposition (CVD) growth process. Type IIa