



ELECTRONIC COPY

LG768614085
Report verification at igi.org



January 26, 2026

IGI Report Number **LG768614085**

Description **LABORATORY GROWN DIAMOND**

Shape and Cutting Style **CUSHION MODIFIED BRILLIANT**

Measurements **11.02 X 9.17 X 5.89 MM**

GRADING RESULTS

Carat Weight **4.54 CARATS**

Color Grade **D**

Clarity Grade **FLAWLESS**

Cut Grade **EXCELLENT**

LABORATORY GROWN DIAMOND REPORT

January 26, 2026

IGI Report Number **LG768614085**

Description **LABORATORY GROWN DIAMOND**

Shape and Cutting Style **CUSHION MODIFIED BRILLIANT**

Measurements **11.02 X 9.17 X 5.89 MM**

GRADING RESULTS

Carat Weight **4.54 CARATS**

Color Grade **D**

Clarity Grade **FLAWLESS**

Cut Grade **EXCELLENT**

ADDITIONAL GRADING INFORMATION

Polish **EXCELLENT**

Symmetry **EXCELLENT**

Fluorescence **NONE**

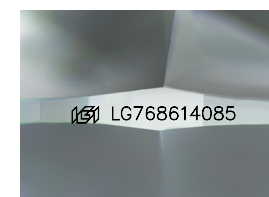
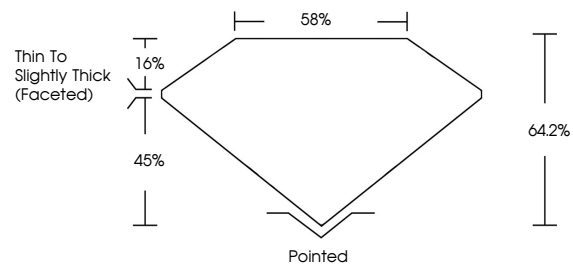
Inscription(s) **LG768614085**

Comments: As Grown - No indication of post-growth treatment.

This Laboratory Grown Diamond was created by High Pressure High Temperature (HPHT) growth process.

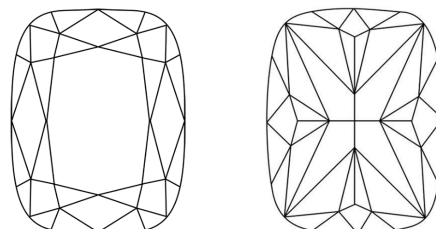
Type II

PROPORTIONS



Sample Image Used

CLARITY CHARACTERISTICS



KEY TO SYMBOLS

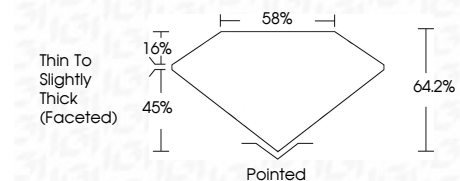
Red symbols indicate internal characteristics.
Green symbols indicate external characteristics.

COLOR

D E F G H I J Faint Very Light Light

CLARITY

FL	IF	VS ¹⁻²	VS ¹⁻²	SI ¹⁻²	I ¹⁻³
Flawless	Internally Flawless	Very Very Slightly Included	Very Slightly Included	Slightly Included	Included



ADDITIONAL GRADING INFORMATION

Polish **EXCELLENT**

Symmetry **EXCELLENT**

Fluorescence **NONE**

Inscription(s) **LG768614085**

Comments: As Grown - No indication of post-growth treatment.

This Laboratory Grown Diamond was created by High Pressure High Temperature (HPHT) growth process.

Type II



IGI



January 26, 2026	IGI Report No LG768614085	CUSHION MODIFIED BRILLIANT	11.02 X 9.17 X 5.89 MM	4.54 CARATS	D	FLAWLESS	EXCELLENT	EXCELLENT	EXCELLENT	POINTED	EXCELLENT	EXCELLENT	NONE	IGI LG768614085
										Thin To Slightly Thick (Faceted)				

Comments: As Grown - No indication of post-growth treatment. This Laboratory Grown Diamond was created by High Pressure High Temperature (HPHT) growth process. Type II