



January 27, 2026

IGI Report Number **LG768624788**

**OVAL BRILLIANT  
LABORATORY GROWN DIAMOND  
7.55 X 5.11 X 3.11 MM**

Carat Weight **0.76 CARAT**  
Color Grade **D**  
Clarity Grade **I.F.**  
Polish **EXCELLENT**  
Symmetry **EXCELLENT**  
Fluorescence **NONE**  
Inscription(s) **IGI LG768624788**

Comments: As Grown - No indication of post-growth treatment. This Laboratory Grown Diamond was created by High Pressure High Temperature (HPHT) growth process. Type II

**LABORATORY GROWN DIAMOND REPORT**

January 27, 2026

IGI Report Number **LG768624788**

Description **LABORATORY GROWN DIAMOND**

Shape and Cutting Style **OVAL BRILLIANT**

Measurements **7.55 X 5.11 X 3.11 MM**

**GRADING RESULTS**

Carat Weight **0.76 CARAT**

Color Grade **D**

Clarity Grade **INTERNALLY FLAWLESS**

**ADDITIONAL GRADING INFORMATION**

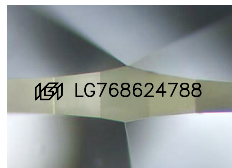
Polish **EXCELLENT**

Symmetry **EXCELLENT**

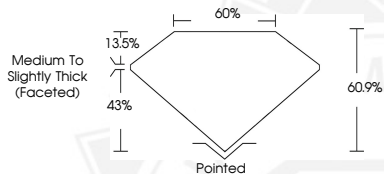
Fluorescence **NONE**

Inscription(s) **IGI LG768624788**

Comments: As Grown - No indication of post-growth treatment. This Laboratory Grown Diamond was created by High Pressure High Temperature (HPHT) growth process. Type II



Sample Image Used



January 27, 2026

IGI Report Number **LG768624788**

**OVAL BRILLIANT  
LABORATORY GROWN DIAMOND  
7.55 X 5.11 X 3.11 MM**

Carat Weight **0.76 CARAT**  
Color Grade **D**  
Clarity Grade **I.F.**  
Polish **EXCELLENT**  
Symmetry **EXCELLENT**  
Fluorescence **NONE**  
Inscription(s) **IGI LG768624788**

Comments: As Grown - No indication of post-growth treatment. This Laboratory Grown Diamond was created by High Pressure High Temperature (HPHT) growth process. Type II



THIS DOCUMENT WAS PRODUCED WITH THE FOLLOWING SECURITY MEASURES: SPECIAL DOCUMENT PAPER, INK SCREENS, WATERMARK, BACKGROUND DESIGNS, HOLOGRAM AND OTHER SECURITY FEATURES NOT LISTED AND DO EXCEED DOCUMENT SECURITY INDUSTRY GUIDELINES.